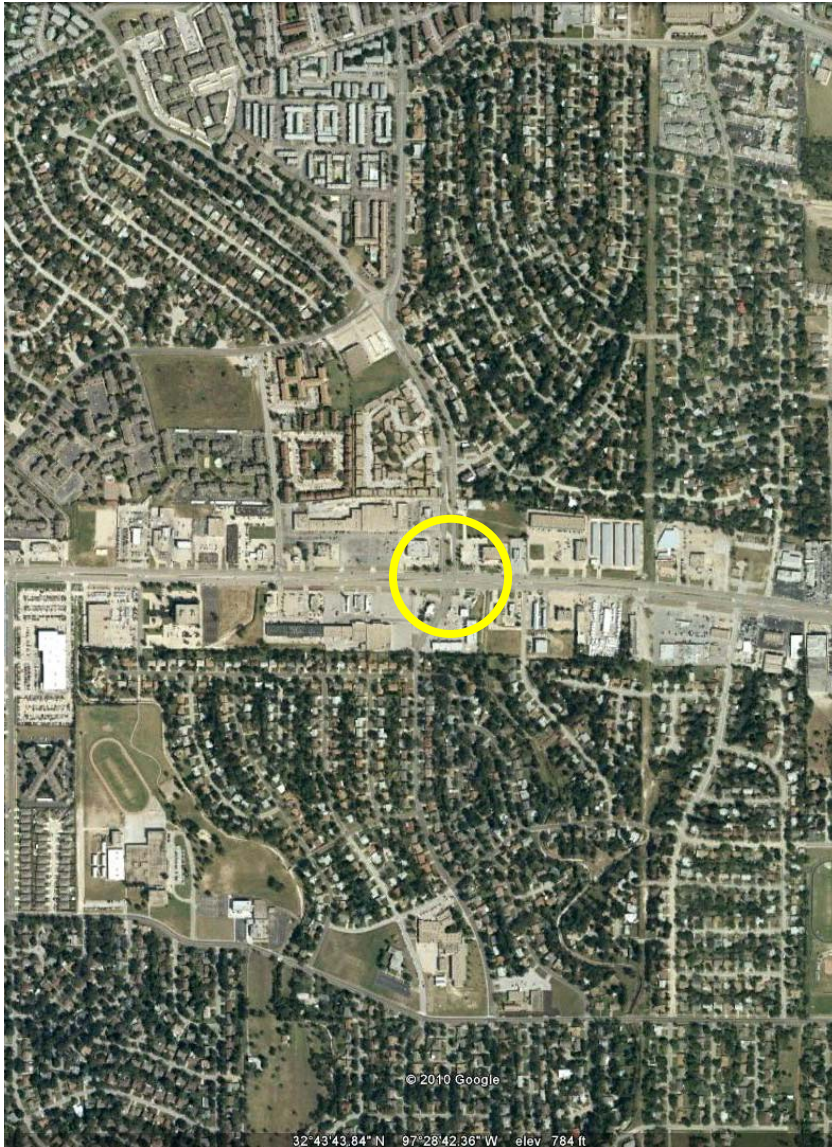


NEW CAMP BOWIE/LAS VEGAS EXPRESS LIBRARY

Vicinity of Camp Bowie Boulevard & Las Vegas Trail,  
Fort Worth 76116



|                                      |                       |
|--------------------------------------|-----------------------|
| Facility Type                        | Express Library       |
| Year to be Built (projected)         | 2015                  |
| Building Size, in Square Feet (BGSF) | 2,500                 |
| Collection Size                      | 7,110                 |
| Staff FTE (Full-Time Equivalents)    | 1.50                  |
| Operating Budget, Proposed (2015)    | \$95,000 <sup>1</sup> |

**Site & Facility Needs**

|                             |                               |
|-----------------------------|-------------------------------|
| <i>unit of capacity</i>     | <i>2015 need to standards</i> |
| Building square feet (BGSF) | 2,500                         |
| Site area, in acres         | n/a                           |
| Parking spaces              | 13                            |

**Distance & Drive Times<sup>2</sup>**

|                             | <i>library</i> | <i>miles</i> | <i>minutes</i> |
|-----------------------------|----------------|--------------|----------------|
| Distance to Nearest Library | Ridglea        | 2 to 4       | 6              |
| Distance to Central Library |                | 9 to 10      | 14             |

**Facility Data**

<sup>1</sup> Operating costs do not include cost of the lease.

<sup>2</sup> As computed using Yahoo! Local Maps and/or MapQuest.

**Demographic Data & Findings<sup>3</sup>**

|   |                                   |
|---|-----------------------------------|
| Population Served   | 80,352                            |
| Households with Children                                    | 20,312                            |
| Persons 17 & Under  | 21,005                            |
| Percentage Persons 17 & Under                               | 26.1%                             |
| Persons 18 to 64  | 48,612                            |
| Persons 65+   | 10,735                            |
| Percentage Persons 65+                                      | 13.4%                             |
| Percentage Asian  | 2.5%                              |
| Percentage Black/African-American                           | 12.9%                             |
| Percentage Hispanic   | 24.7%                             |
| Category & Percentage Core Customers:                       |                                   |
| Top Category & %  | F01 Steadfast Conservatives 11.4% |
| 2nd Category & %  | B03 Urban Commuter Families 7.3%  |
| Library Materials/Services More Likely to be Used:          |                                   |
| Best Sellers, Books on CD, Adult Fiction, Adult Non-Fiction |                                   |

**Recommendations**

Lease 2,500square feet of space in the vicinity of Camp Bowie Boulevard and Las Vegas Trail by 2015. Offer targeted services based on location demographics.

**Collections Mix**

|   |       |
|---|-------|
| Collections for Adults, % of Total Collection         | 72.8% |
| Collections for Children/Teens, % of Total Collection | 27.2% |
| Media Collections for All Ages, % of Total Collection | 16.5% |

**Service Delivery Mix**

Year 2015 & 2020 quantities are based on 2,500 square feet by 2015, offering targeted services per demographics.

| <b>Collections</b>           | 2015         | 2020         |
|------------------------------|--------------|--------------|
| Popular Display              | 700          | 700          |
| Adult Fiction                | 2,100        | 2,200        |
| Adult Non-Fiction/Reference  | 1,000        | 1,250        |
| Special Collections: Spanish | 200          | 300          |
| Easy/Picture/Board           | 900          | 1,150        |
| Youth Fiction/Non-Fiction    | 1,100        | 1,150        |
| Teen Fiction/Non-Fiction     | 200          | 300          |
| Media CDs/DVDs               | 900          | 1,400        |
| Current Periodicals          | 10           | 15           |
| <b>TOTAL ITEMS:</b>          | <b>7,110</b> | <b>8,465</b> |

| <b>Computers</b>        | 2015     | 2020      |
|-------------------------|----------|-----------|
| Adult                   | 4        | 6         |
| Youth                   | 1        | 2         |
| Teen                    | 1        | 2         |
| <b>TOTAL COMPUTERS:</b> | <b>6</b> | <b>10</b> |

| <b>Seating</b>         | 2015       | 2020       |
|------------------------|------------|------------|
| Adult                  | 4          | 6          |
| Youth                  | 4          | 4          |
| Teen                   | 4          | 6          |
| <b>TOTAL SEATS:</b>    | <b>12</b>  | <b>16</b>  |
| <b>ITEMS PER SEAT:</b> | <b>593</b> | <b>529</b> |

| <b>Meeting Room</b> | 2015 | 2020 |
|---------------------|------|------|
| Seats               | n/a  | n/a  |

| <b>Staff</b> | 2015 | 2020 |
|--------------|------|------|
| FTE          | 1.50 | 2.00 |

<sup>3</sup> As provided by Buxton Co.