

City of Fort Worth: Planning Jurisdiction

Gas Wells and Gas Pipelines June 2008

Source: Planning and Development Department; IT: SEW July 2008

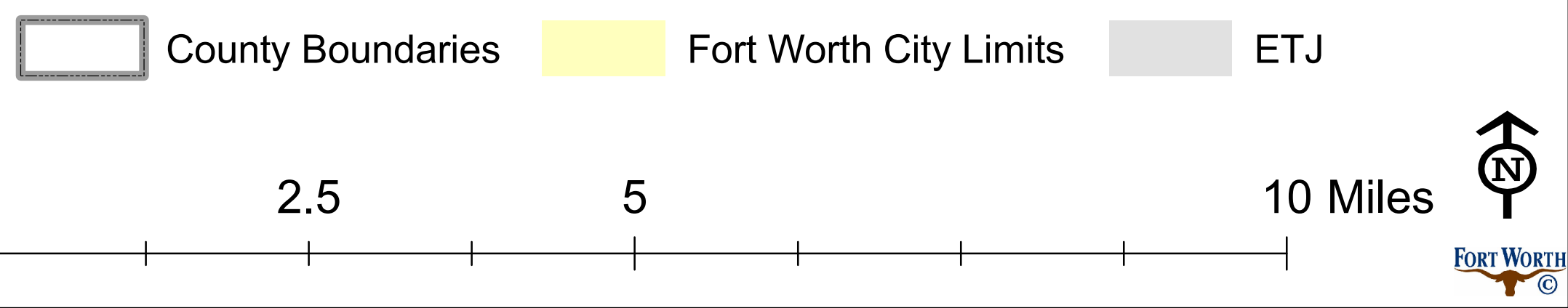
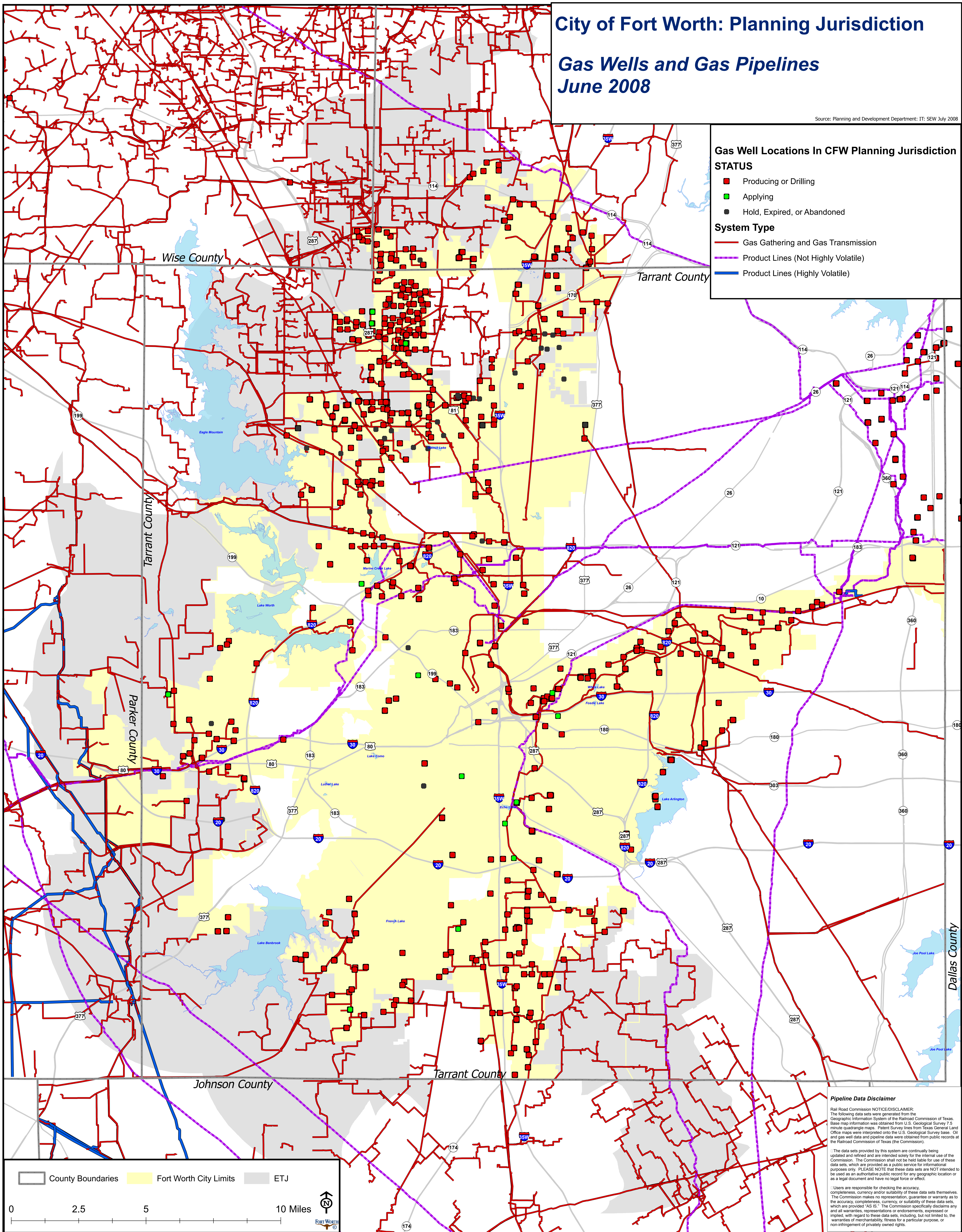
Gas Well Locations In CFW Planning Jurisdiction

STATUS

- Producing or Drilling
- Applying
- Hold, Expired, or Abandoned

System Type

- Gas Gathering and Gas Transmission
- Product Lines (Not Highly Volatile)
- Product Lines (Highly Volatile)



Pipeline Data Disclaimer
Rail Road Commission NOTICE/DISCLAIMER:
The following data sets were generated from the Geographic Information System of the Railroad Commission of Texas. Base map information was obtained from U.S. Geological Survey 7.5 minute quadrangle maps. Patent Survey lines from Texas General Land Office maps were interpreted onto the U.S. Geological Survey base. Oil and gas well data and pipeline data were obtained from public records at the Railroad Commission of Texas (the Commission).
The data sets provided by this system are continually being updated and refined and are intended solely for the internal use of the Commission. The Commission shall not be held liable for use of these data sets, which are provided as a public service for informational purposes only. PLEASE NOTE that these data sets are NOT intended to be used as an authoritative public record for any geographic location or as a legal document and have no legal force or effect.
Users are responsible for checking the accuracy, completeness, currency and/or suitability of these data sets themselves. The Commission makes no representation, guarantee or warranty as to the accuracy, completeness, currency, or suitability of these data sets, which are provided "AS IS". The Commission specifically disclaims any and all warranties, representations or endorsements, expressed or implied, with regard to these data sets, including, but not limited to, the warranties of merchantability, fitness for a particular purpose, or non-infringement of privately owned rights.