



Our Mission

Our mission is to promote a strong economy and enhance the quality of life by providing sustainable housing and economic development programs through Fort Worth.

Economic Data

Fort Worth Population: 720,250

Unemployment Rate: March 2010
Fort Worth-Arlington MD 8.3%

Source: Fort Worth Chamber of Commerce

Cost of Living: Overall 91.1
Housing 75.2
Grocery 93.8

Source: Fort Worth Chamber of Commerce

Labor Force March 2010
Dallas-Fort Worth-Arlington, TX

Sector	2009	2010
Total Nonfarm	2,880.5	2,838.0
Mining, Logging, Construction	175.5	152.1
Manufacturing	268.3	256.7
Trade, Transportation, Utilities	599.9	582.2
Information	84.1	78.4
Financial Activities	226.6	222.6
Professional & Business Services	416.3	413.9
Educational & Health Services	336.6	355.1
Leisure & Hospitality	277.1	277.1
Other Services	101.7	98.5
Government	394.4	104.4

Sources: US Department of Labor

Top 5 Fort Worth Employers

AMR/American Airlines 24,540
Texas Health Resources 18,448
Lockheed Martin Aeronautics 13,500
Fort Worth ISD 10,316
Arlington ISD 8,126

Source: Fort Worth Chamber of Commerce



Project In the Spotlight

Renaissance Square Development



The Largest Retail Project in the History of Southeast Fort Worth

Renaissance Square is a 67-acre grocery-anchored shopping center located in the heart of Fort Worth, Texas. A joint venture between Lockard Development, Moriah Real Estate Company of Midland Texas, and Synergy Properties of Fort Worth, Texas, Renaissance Square features over 500,000 sq. ft. of shopping, sit down restaurants, fast food, and much more; located just off the Martin Luther King Freeway at the intersection of East Berry and Vaughn Streets.



From left to right: Councilmember Frank Moss, Commissioner Roy Brooks, Senator Wendy Davis, Councilmember Jungus Jordan, Mayor Pro-Tem Danny Scarth, Mayor Mike Moncrief, and Councilmember Kathleen Hicks



Allens, Inc.

One of the largest privately owned vegetable companies in the country

Allens, Inc., based in the small town of Siloam Springs, Arkansas, is one of the largest private canner of foods in the world, offering a full line of canned vegetables to the retail food and food service industries, including a variety of southern vegetables. The company also does contract canning for major and private labels. Allens has entered into a tax abatement agreement with the City of Fort Worth and has committed to create 100 new jobs and invest \$4.7 million on plant improvements to the Ranch Style Beans facility on US 287.

“We were so concerned about this building being empty,” Councilmember Hicks said. “It will be reused in such a positive manner; this is so phenomenal for our city. We look forward to them being on the ground soon.”



CoAire Corporation

Coaire opens a distribution and manufacturing center in Fort Worth

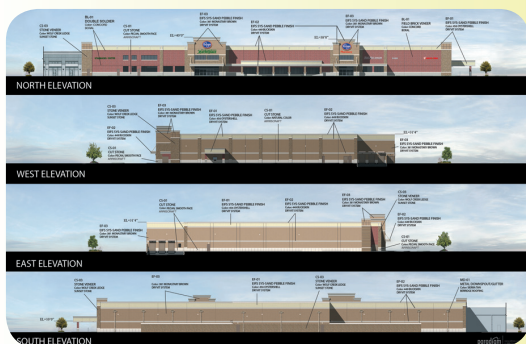
Coaire Corp., an international manufacturer and distributor of high tech and energy efficient heating, air conditioning, hot water and energy-producing units selected Northern Crossing Business Park in Fort Worth as the site of its newest distribution center. The 64,000 sq. ft. facility located on Interstate 35W and Northeast Loop 820 will serve as a sales product training and distribution center. During the first year the company plans to add 60,000 sq. ft. to make solar panels. Manufacturing will start upon the completion of the Korean facility that will manufacture the cells needed for these solar panels.



Health Care Services Corporation d/b/a Blue Cross Blue Shield of Texas

Leading provider of health care benefits to open data center in Fort Worth

Health Care Services Corporation, d/b/a Blue Cross Blue Shield of Texas (BCBS) is the leading provider of health care benefits. Blue Cross Blue Shield of Texas is located in Alliance Gateway Business Park in north Fort Worth in a newly constructed state-of-the-art 220,000 sq. ft. data center.



Kroger Marketplace

First Kroger Marketplace in Tarrant County will open at Alliance Town Center

Kroger Marketplace is scheduled to open in the fourth quarter of 2010 and will be located at the southwest corner of Heritage Trace Parkway and Riverside Drive.

The 123,000 sq. ft. store will offer features unique to a Kroger Signature store along with an expanded variety of grocery and deli products, a large floral section, fuel center, gourmet and chef-prepared foods, and a wine shop. The store will have linens for the bathroom and other areas of the home, a kitchen place area with upscale kitchenware and place settings, and the latest toys. The Nature's Market section will offer all-natural and organic products and the drive-through pharmacy will provide consumers with \$4 generic drugs. The Kroger Marketplace will also feature a Fred Meyer Jeweler store, as well as a large home-furnishing section with Ashley Brand furniture.