

# MERCADO



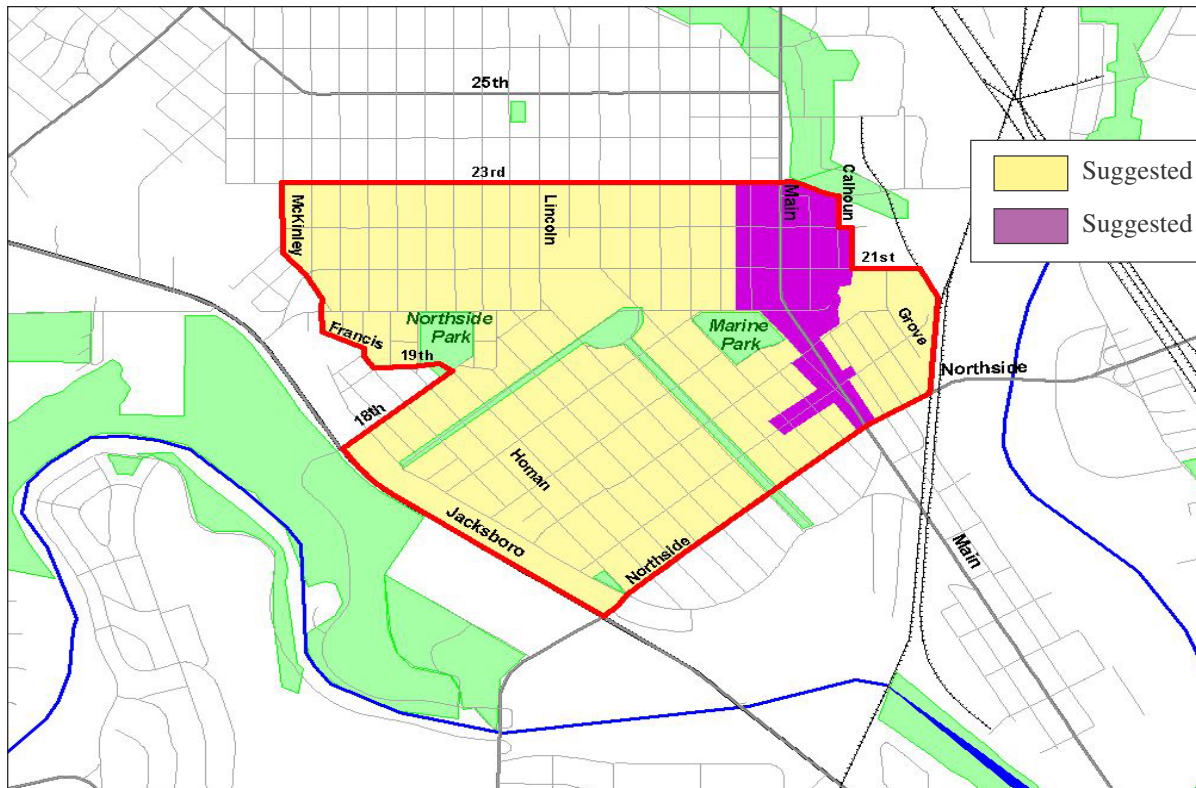
The plan for Mercado can be found in the *North Main Street Corridor Study*. Copies are available in the Planning Department in City Hall.

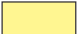

## Current Project

Mercado, mixed-use

## Public Funding Secured

- \$ 0.5 million 1998 CIP
- 1.0 million EDI
- 5.0 million Section 108
- 0.4 million EDA (alley)
- 0.1 million TCSP
- 0.7 million STEP
- \$ 7.7 million



	Suggested NEZ Boundary
	Suggested Urban Village Boundary

### Neighborhoods

- Belmont Terrace
- Marine Park
- Northside

### Suggested NEZ

Population	9,772
Land Area	1.27 Sq. Miles
Percent in Central City	100%
Percent CDBG Eligible	96%

