

DRAFT RECOMMENDATIONS

Safety

- Increase pedestrian lighting along Berry Street from Sycamore Creek to the railroad, along Riverside from Devitt to Glen Gardens, and along Glen Gardens from Cobb Park to Yuma
- Extend sidewalks along Berry Street and Glen Gardens from School to Cobb Park
- Improve safety, police enforcement, and access to Cobb Park. Cobb Park is currently perceived as a safety problem due to lack of lighting, loitering, and crime

Streetscape/District Identity

- Create district identity – monument signs/ banner poles/ signage fitting with the surrounding neighborhood
- Focus on streetscape improvements along Berry from Yuma to Sycamore Creek as Phase 2 priority

Development

- Encourage where possible the design of potential retail, commercial and residential of an urban form to be consistent with mixed use zoning

Parks/Open Space

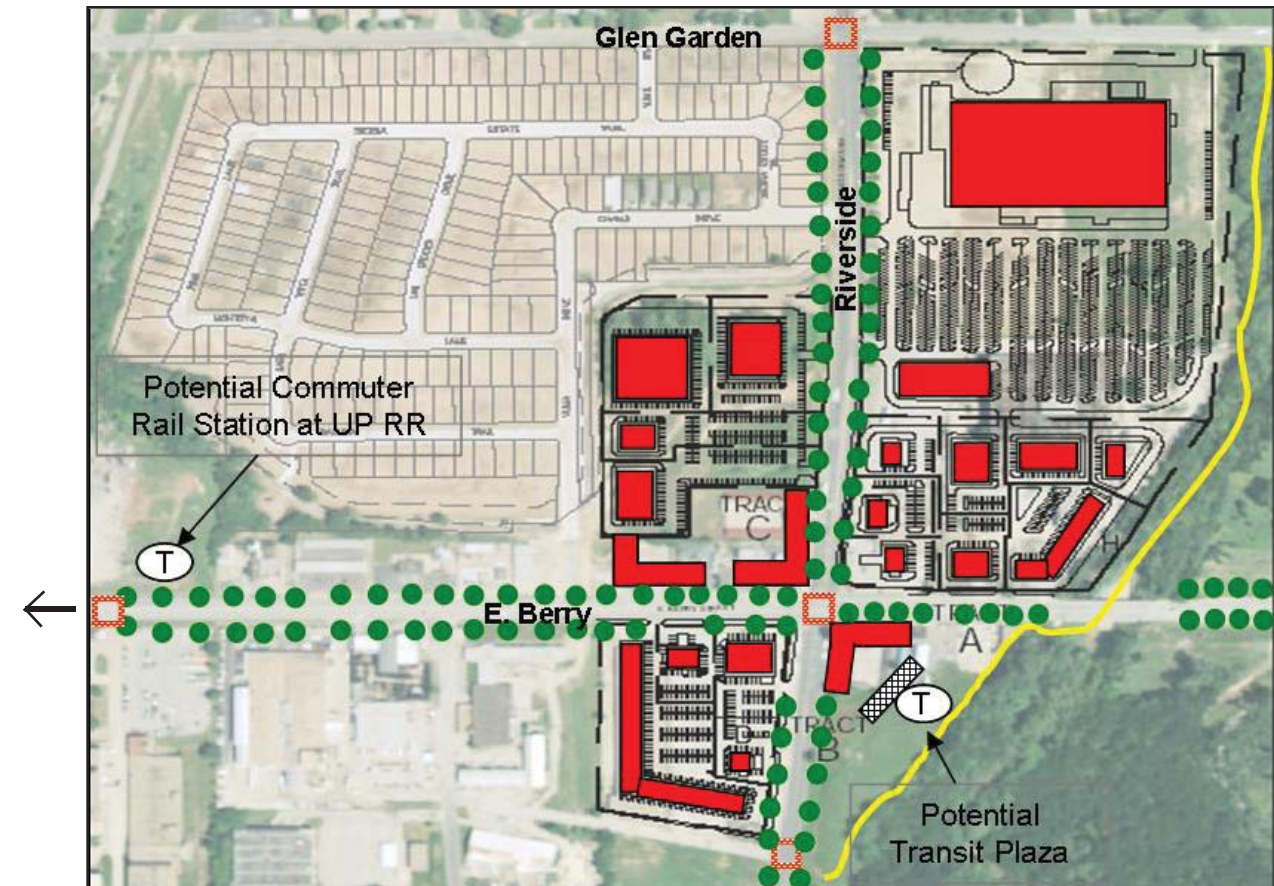
- Coordinate with City of Fort Worth Parks and Community Services Department on their planning efforts for the Cobb Park Master Plan. This is a great asset for the village and community and should be enhanced and maintained to encourage more use. Extension of the Trinity Trail system and connections from new development to the greenbelt is recommended
- Remove/ clean-up brush and trash along Sycamore Creek near Berry Street to allow views of the creek and greenbelt

Transportation

- Support the need for a future location of a transfer center in or near this village
- Improve intersection at Berry/ Riverside and Glen Gardens/ Riverside for an upgraded signal, crosswalks, and ADA compliant ramps. This signal upgrade is part of the City's signal intersection improvement program and being coordinated through TxDOT. An upgrade to the standard city intersection is recommended to include a decorative mast arm assembly.

Zoning

- Rezone properties currently zoned as E, K, & G to MU-1



Berry/Riverside Urban Village
View looking west on Berry Street



Doc's Auto Insurance Building
View of southeast corner of Berry Street and Riverside Drive

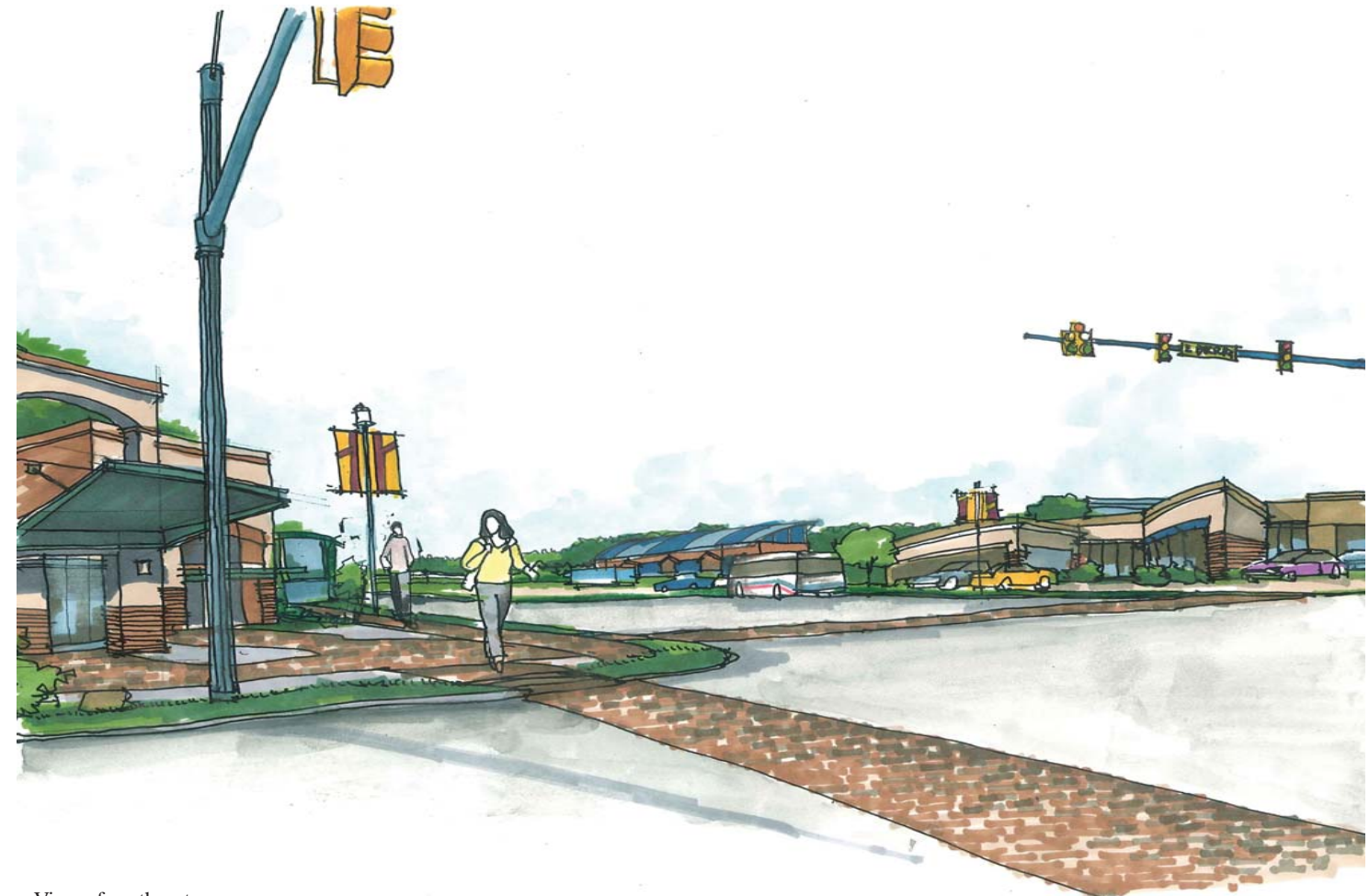
PHASE 2 PRIORITIES:

1. Intersection Improvements at Berry/Riverside

- New traffic signal
- ADA ramps
- Decorative 10' crosswalks

2. Streetscape improvements from Yuma to Sycamore Creek

- New 5' sidewalks
- New bridge handrail
- New roadway street lights
- New trees (100 gal.) with irrigation
- New crosswalk at Yuma Street



View of northeast corner
Intersection of Berry Street and Riverside Drive