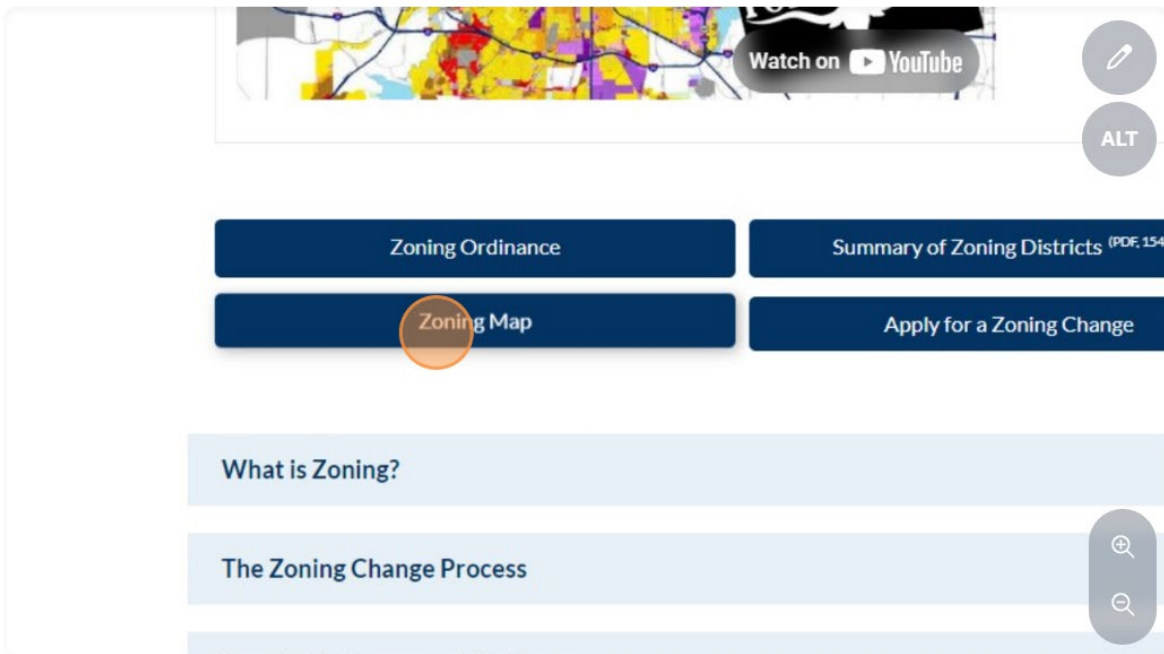


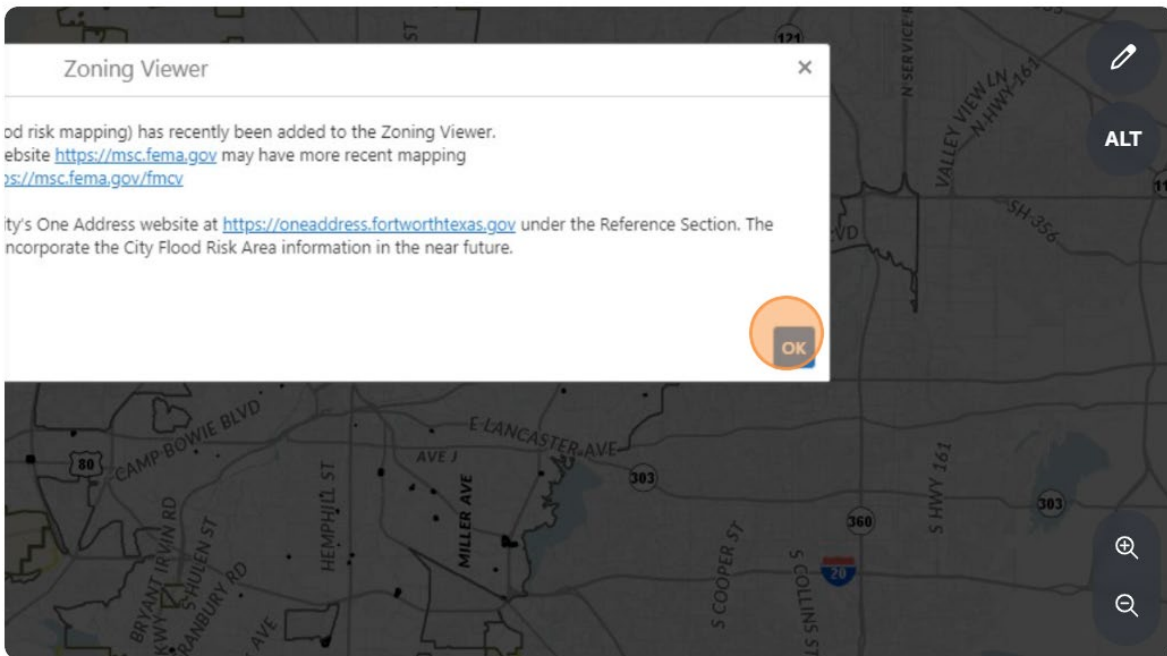
How to Access Planned Development (PD) Documents through our Zoning Map

1 Go to: www.fortworthtexas.gov/departments/development-services/zoning

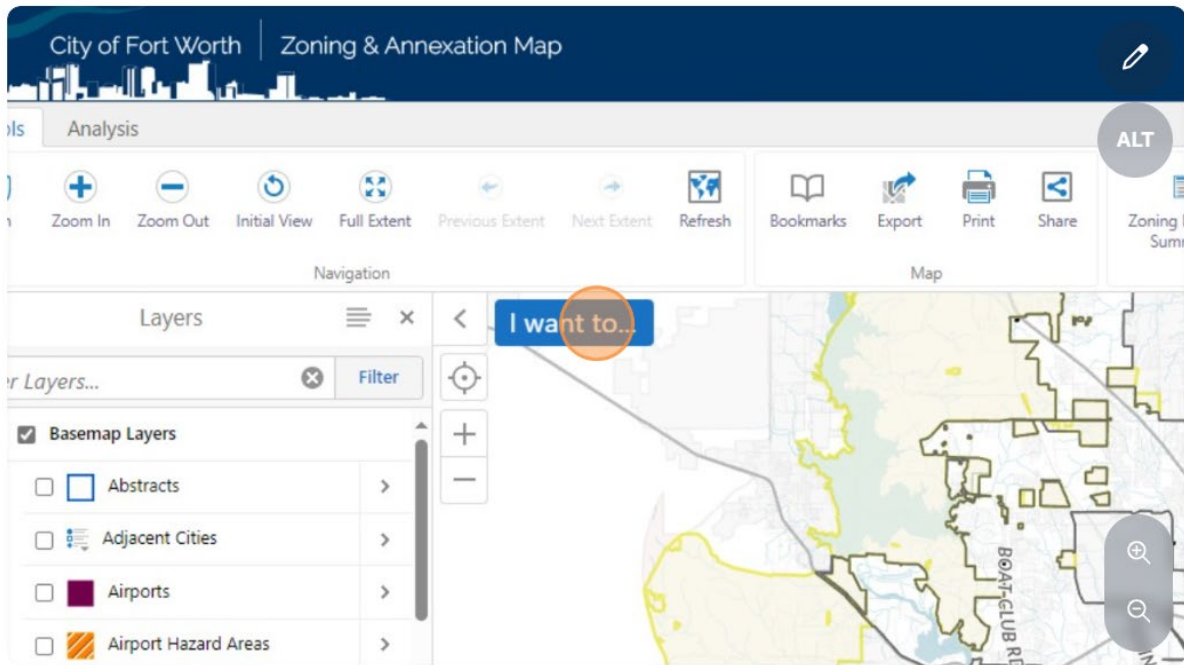
2 Click "Zoning Map"



3 Click "OK"

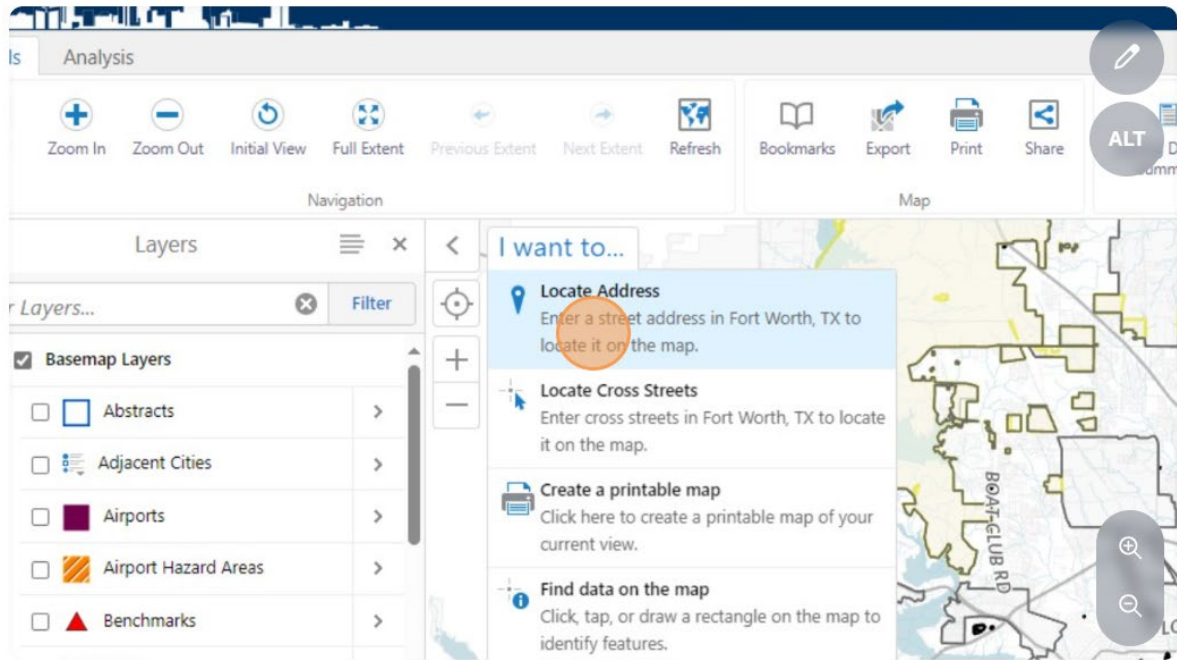


4 Click "I want to..."



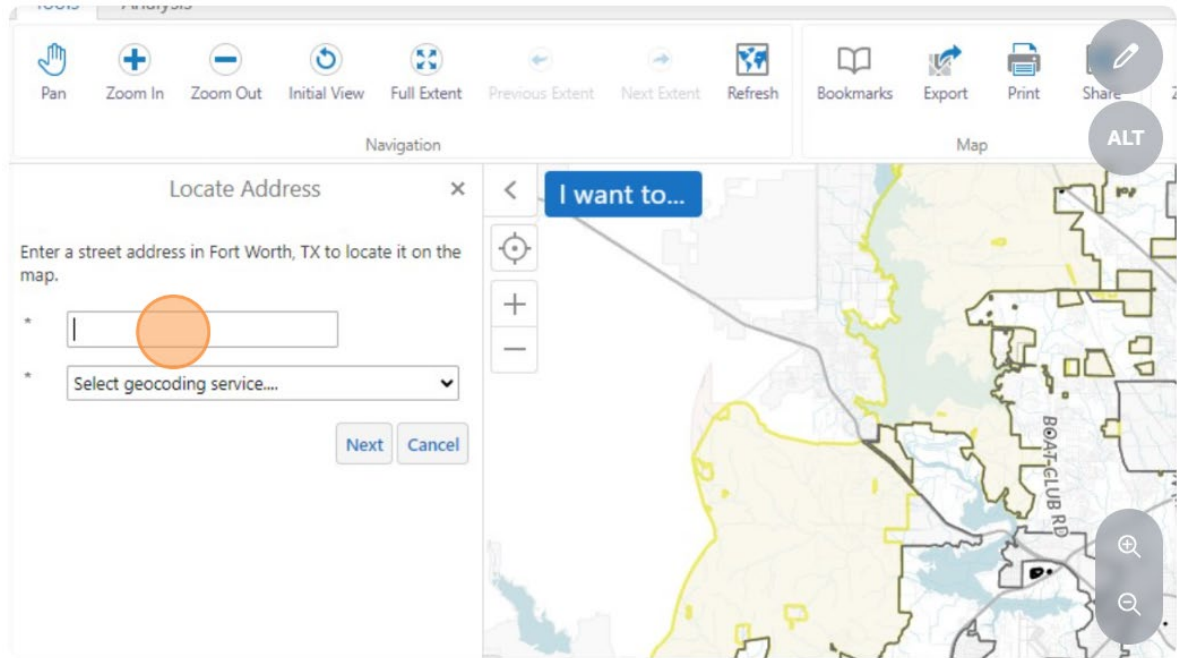
5

Click "Enter a street address in Fort Worth, TX to locate it on the map."



6

Click the "*" field.

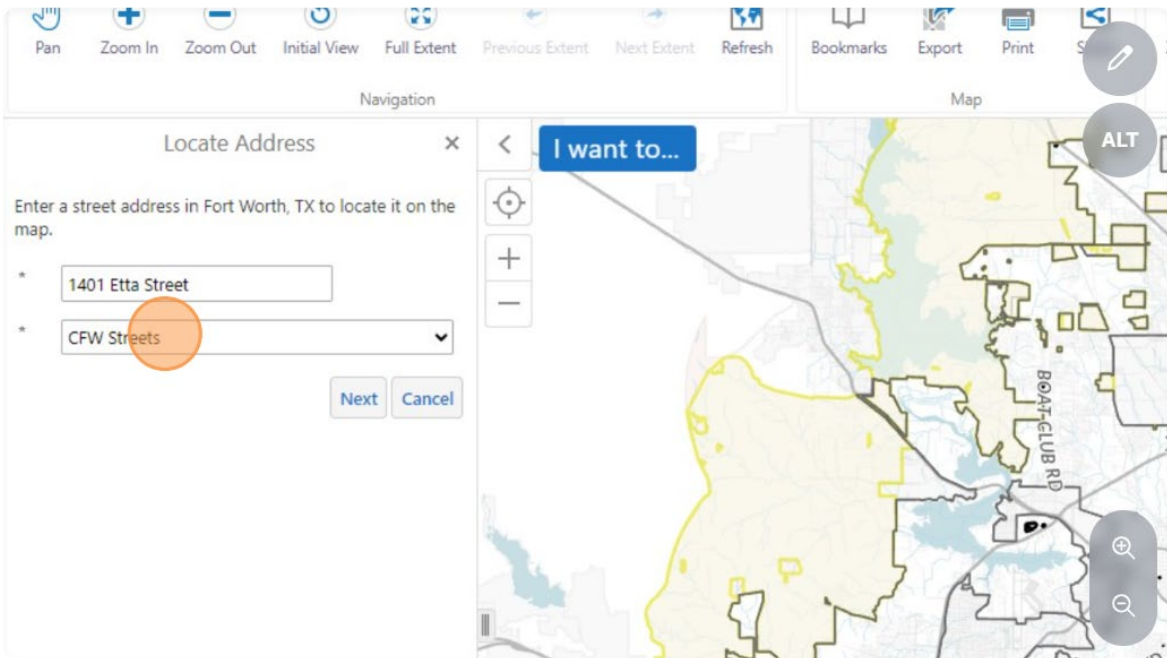


7

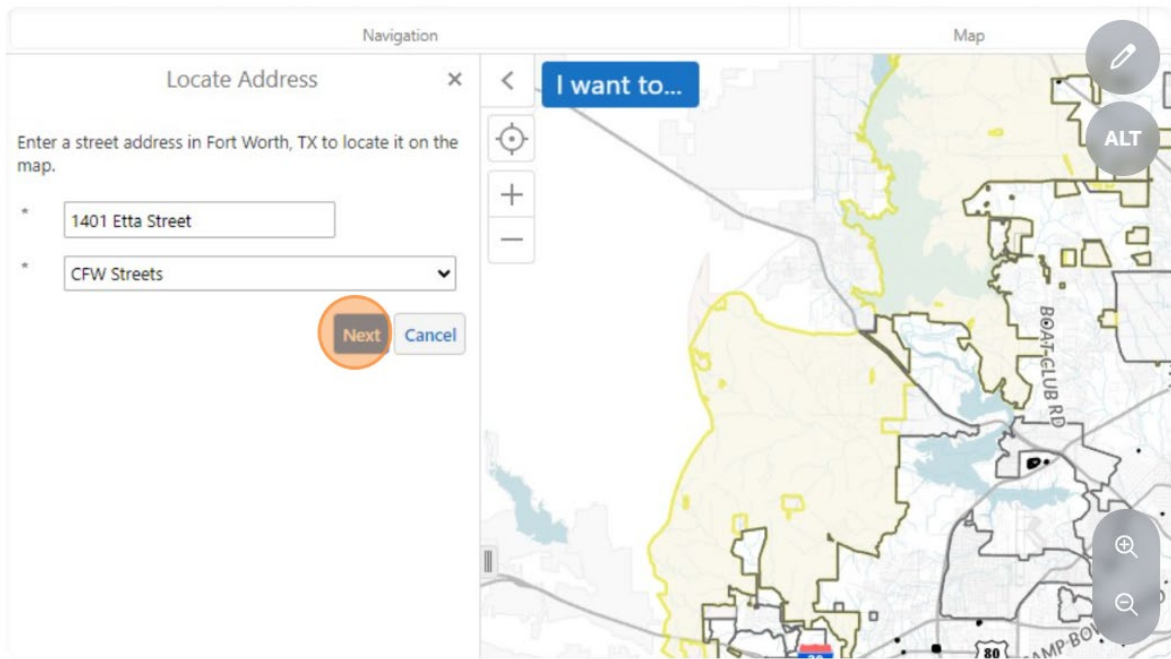
Type in the address you would like to review (Example "1401 Etta Street")

8

Select the "CFW Streets" option.

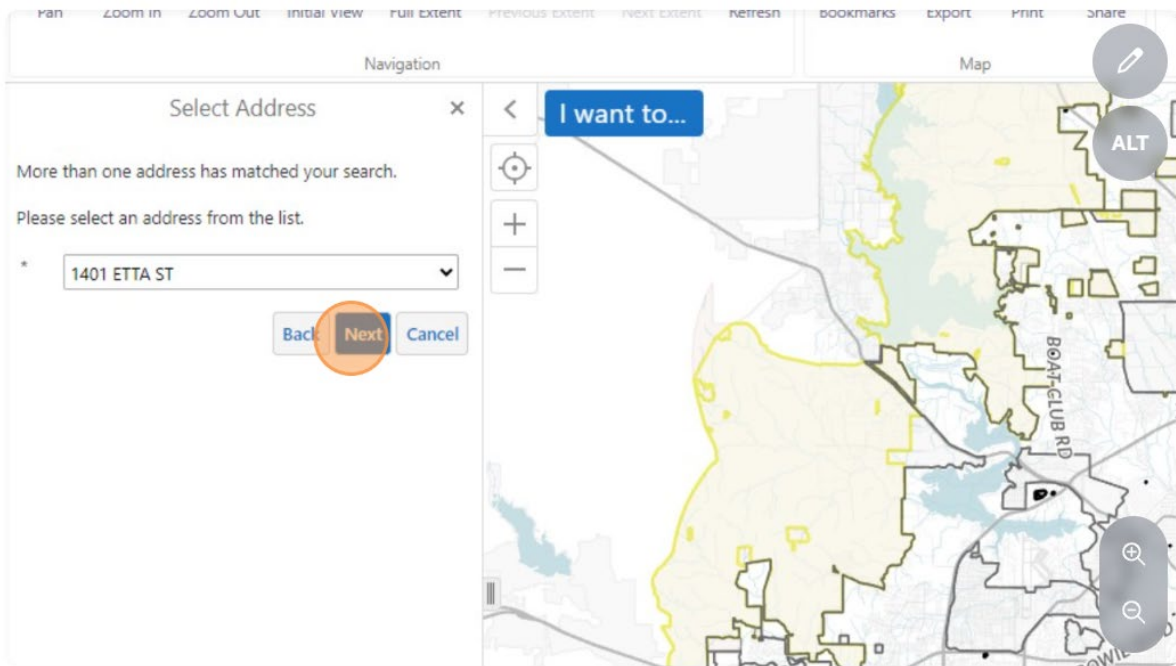


9 Click "Next"

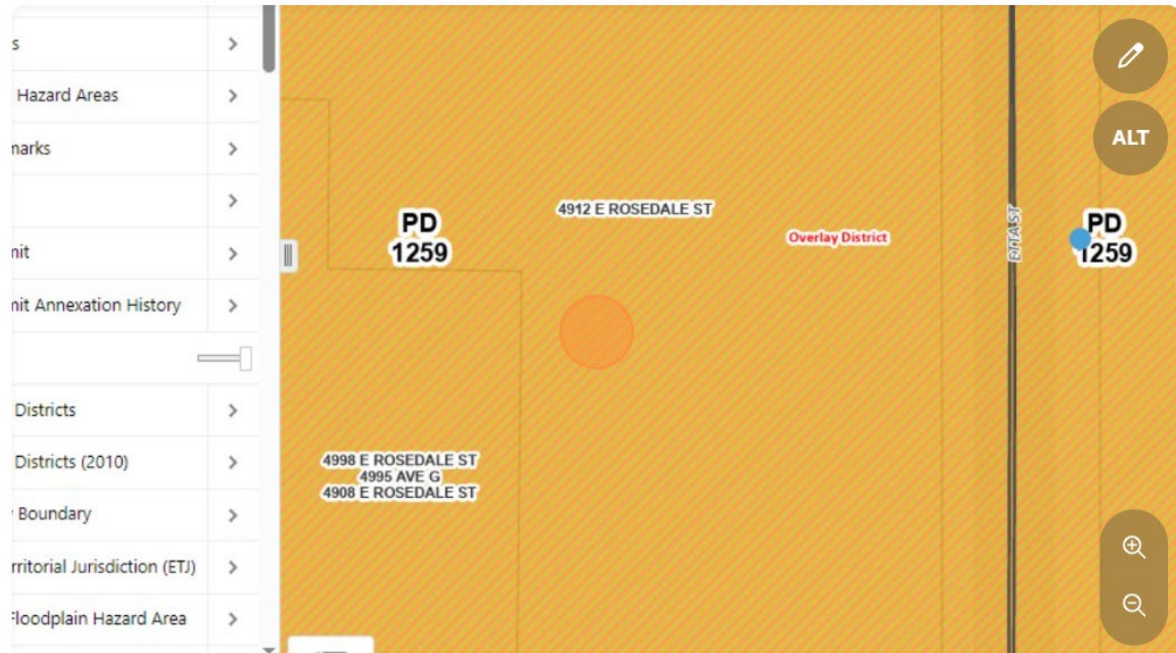


10 Verify the address you have submitted

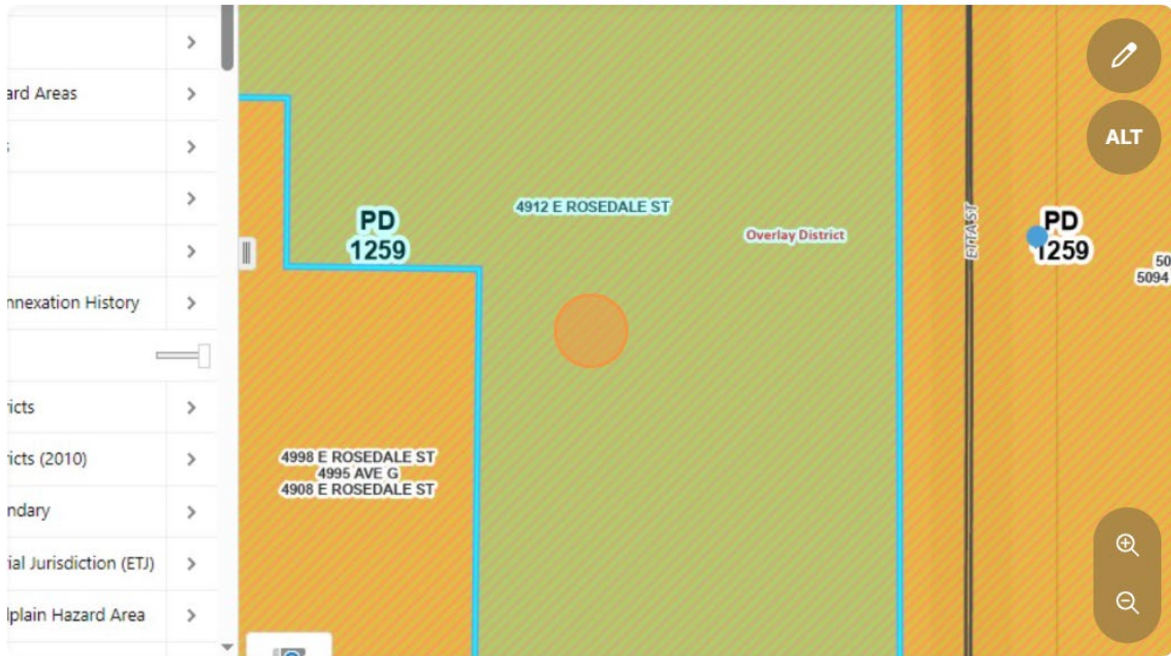
11 Click "Next"



12 Toggle over the Planned Development (PD) you would like review.



13 Right-click here.



14 Click "Find data on the map"



15 Click "Zoning Fill"

Tools Analysis

Pan Zoom In Zoom Out Initial View Full Extent Previous Extent Next Extent Refresh Bookmarks Export Print Share

Navigation Map

Identify Results (4)

4 Results Found

- (1) Zoning Fill
- (1) Zoning Outline
- (1) Overlay Districts
- (1) Lots

I want to...

☆ ROSEDALE

[View Additional Details](#) [Add to Results](#)

4912 E ROSEDALE ST

16 Click "PD"

City of Fort Worth | Zoning & Annexation Map

Tools Analysis

Pan Zoom In Zoom Out Initial View Full Extent Previous Extent Next Extent Refresh Bookmarks Export Print Share

Navigation Map

Zoning Fill (1)

- ☆ PD

I want to...

☆ ROSEDALE

[View Additional Details](#) [Add to Results](#)

4912 E ROSEDALE ST

17 Scroll down to "PD_Document"

18 Click "View Documents"

ORD_EFF_DATE
N/A

PD_DESCRIPTION
To: Amend "PD 1259" Planned Development for all uses in "MU-1" Low Intensity Mixed Use with waiver to maximum building height and minimum parking requirements to allow for permanent food trucks, site plan approved attached as Exhibit 'G' and on file with the Development Services Department

Short_Term_Rentals
Zoning Verification Required

Approval_Date
N/A

COUNCIL_DIST
5

PD_DOCUMENT
[View Documents](#)

Layers PD

Basemaps WKID: 4326 Lat/Long ▲ Lat: 32.73078° N Lon: 97.24863° W 0 100 300ft

19 Finally, the PD document will upload in a new tab. Congratulations! You now have all the information you need to help make the City of Fort Worth even more beautiful.