



PUBLIC MEETING





OAK GROVE COMMUNITY PARK PUBLIC MEETING 1

THURSDAY, SEPTEMBER 14, 2023, AT 6:30 P.M.
IN THE ROY JOHNSON STEM ACADEMY CAFETERIA

ACKNOWLEDGEMENTS

COUNCIL DISTRICT EIGHT

Councilman Chris Nettles

District Director Sally Metzen

CITY OF FORT WORTH PARK & RECREATION

Patrick Vicknair

ARTS FORT WORTH

Martha Peters

O'FLINN DESIGN GROUP

Larry O'Flinn

Danielle O'Flinn

CONTENT

INTRODUCTION

The Oak Grove Community Park Opportunity
Fort Worth Park Planning Background
Public & Consultant Partnership

OBJECTIVES

Park Objectives & Potential Park Features

REGIONAL CONTEXT

Proximity to Significant Facilities

SITE OVERVIEW

PARK PRIORITIZATION

CONCLUSION

Next Steps
Community Resources

CREDITS





INTRODUCTION

THE OAK GROVE COMMUNITY PARK OPPORTUNITY

A study conducted by the Park & Recreation Department in April of 2015 found that south Fort Worth required additional parkland to accommodate the population growth and community development within the area.

Although updating the park system to accommodate the demands of the current and projected population growth presents challenges, it also introduces the opportunity to plan a vital and sustainable park that supports the dynamic community.

Acquired by the City of Fort Worth in November of 2015, the 67.39 -acre property south of Everman Parkway and east of Oak Grove Road as the site for the future Oak Grove Community Park. The prospective park is an opportunity to provide this area of south Fort Worth with a park that will support and enrich the dynamic vitality of the community.

Ideally fitted to the Park & Recreation Department criteria for a community-based park, potential amenities for Oak Grove Community Park include, but are not limited to, practice fields/open play, walking trails, picnic shelters with site furnishings, playgrounds, security lighting, roads and parking.





INTRODUCTION



FORT WORTH PARK PLANNING BACKGROUND

- 1908** A group of volunteers founded the Fort Worth Park League. Advocating to make parks a City priority, the Park League enlisted the expertise of renown Landscape Architect, George E. Kessler.
- 1909** Fort Worth adopted Kessler's Park Master Plan, founding a citywide park system dedicated to the development of parks, recreation, and open spaces that preserve natural resources, serve as a link between residential, commercial, and recreational city sectors, and enhance the quality of life in every community.
- 1925** The City began its partnership with Hare & Hare, producing Park Master Plans in 1930 and 1957. True to Kessler's original plan, the successive Park Master Plans created by Hare & Hare helped secure the Fort Worth park system legacy.
- 1998** Fort Worth Park & Recreation included the first locally determined needs-based standards policy as part of the 1998 Parks, Recreation, and Open Space Master Plan, making a significant strategic contribution to the park planning process.
- 2015** City Council adopted the current Parks, Recreation, and Open Space Master Plan. A 2020 Master Plan Update was adopted to reflect recent population growth and the reassessment of park priorities based on updated needs-based standards system.

The City of Fort Worth purchased 67.39 acres in Council District 8, as additional parkland to meet anticipated growth in south Fort Worth.
- 2022** 2022 Bond Program: Fort Worth Proposition B Park and Recreation Improvements allocated \$3 million to go towards the master planning, design, and construction of park amenities for Oak Grove Community Park.
- 2023** Defined park objectives and retained O'Flinn Design Group as the prime consultant for the development of the Oak Grove Community Park Master Plan.





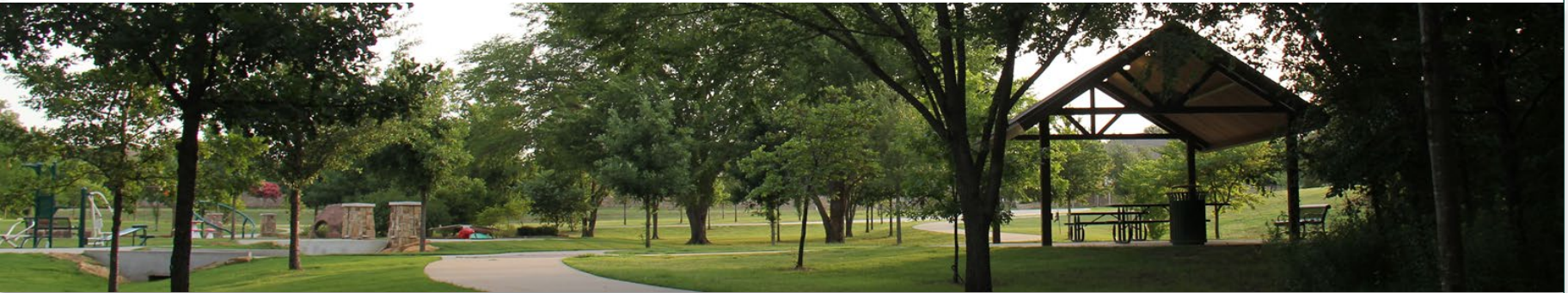
INTRODUCTION

PUBLIC & CONSULTANT PARTNERSHIP

Fort Worth Park & Recreation has partnered with O'Flinn Design Group to develop a park master plan that meets the needs of your growing community.

Committed to the important role parks and community play in the identity of a city, the O'Flinn Design Group invokes a civic-minded approach to park master planning that aligns with the Fort Worth park system legacy founded by George E. Kessler. The O'Flinn Design Group has partnered with the City on many park master plans to produce successful park systems that enrich the lives of Fort Worth residents.

Recent park master plan partnerships between Fort Worth Park & Recreation and O'Flinn Design Group include, North Z Boaz Park, Chisholm Trail Community Park, Harmon Field Park, Harriet Creek Ranch Park, James Watts Park, and the future Oak Grove Community Park.



PARK PLANNING PROCESS

PRE-DESIGN:

Define park objectives.
Site analysis and assessment of park opportunities.
Engage with the community to define park priorities.

CONCEPT DESIGN:

Pre-liminary Master Plan and park concept designs development based on park priorities defined by the community.
Present concept designs for the park to the public for feedback from the community.

MASTER PLAN:

Final Master Plan and phasing schedule.
Master Plan submission to the Park Board for approval.





OBJECTIVES

PRIMARY OBJECTIVES FOR OAK GROVE COMMUNITY PARK

Create a vital and sustainable community park. Oak Grove Community Park will serve as a link, bringing the community together. The park will elevate and support local neighborhoods, schools, businesses, and organizations.

Conserve, respect, and represent the park system along with the priorities and dynamics of the community.

Enhance the quality of life for current and future community residents.



POTENTIAL PARK FEATURES

- Practice Fields**
- Playgrounds**
- Trails**
- Open Spaces/Natural Areas**
- Individual picnic tables**
- Small group picnic shelters**
- Large group picnic shelters**
- Benches, drinking fountains, and other site furnishings**
- Parking**
- Security Lighting**



PUBLIC ART PROJECT

Oak Grove Community Park is included in the Public Art Plan for the 2022 Bond Program with a total budget of \$250,000.

Guided by the Fort Worth Public Art Master Plan Update (2017), planning for the park's public art project will begin as the Oak Grove Community Park Master Plan is developed.

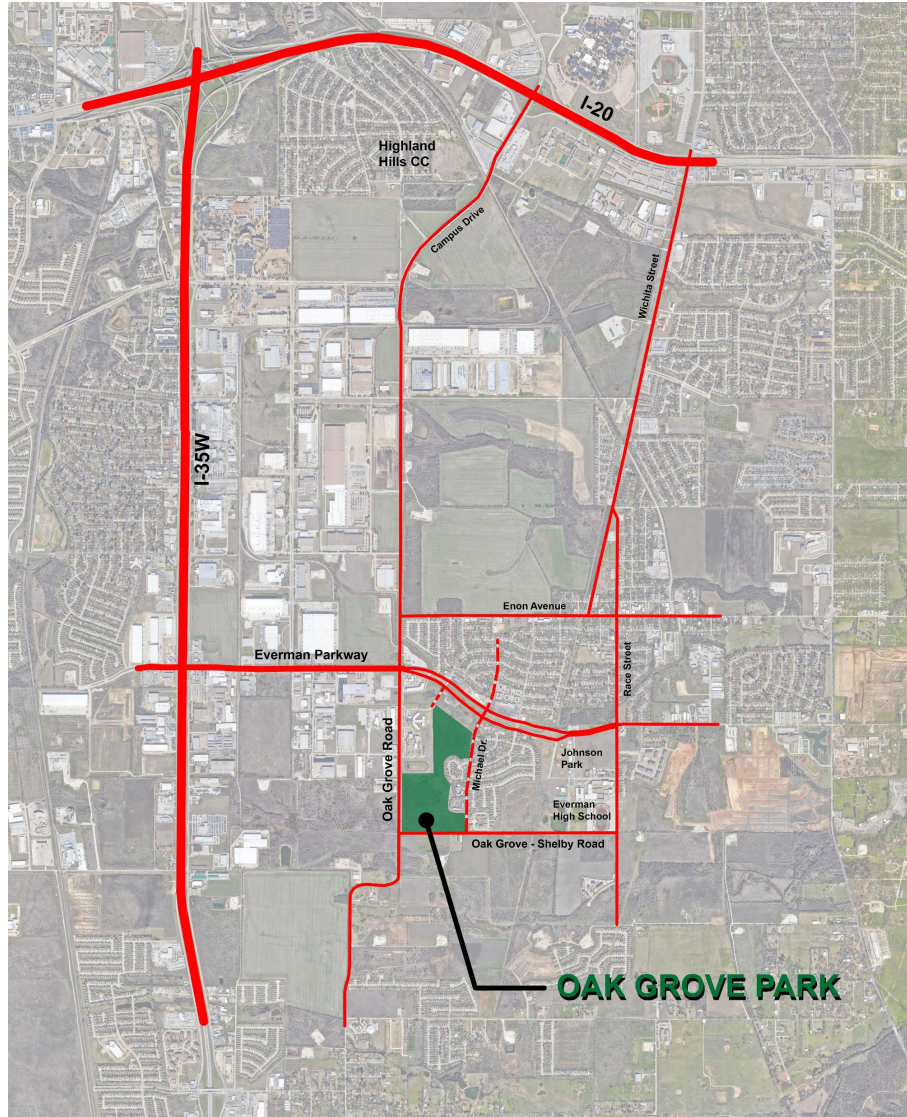
Five to seven community members will be invited to serve on a Project Core Team that will be closely involved with the park's public art project.

For more information about Fort Worth Public Art visit <https://fwpublicart.org> or email talkto@artsfortworth.org





REGIONAL CONTEXT



Located in the heart of southeast Fort Worth.
1.2 miles east of I-35
3.2 miles south of I-2

PROXIMITY TO SIGNIFICANT FACILITIES

Everman High School is a little over half a mile to the east.
Johnson Park is 0.35 miles east.
Highland Hills Community Center is 3.2 miles north via Oak Grove Rd.





SITE OVERVIEW

Oak Grove Community Park comprised of five distinct zones. Defined by unique characteristics and individual attributes. Each one of the five zones presents opportunities for potential park features.

THE KNOLL

ZONE CHARACTERISTICS:

10.7 –acres with scattered large trees (mostly Cedar Elms) and heavy underbrush. Rolling terrain with an average slope of 1.0, including the high point of the property with views to the east. In good relationship to the Roy Johnson STEM Academy, located just north of the track.

PARK OPPORTUNITIES:

Large picnic shelter, playground, trails, trail head, benches, individual picnic tables, parking, and public art.

CORNER MEADOW

ZONE CHARACTERISTICS:

3.8 -acres of relatively flat (less than 1%) open meadow, located at the corner of Oak Grove-Shelby Rd. and Michael Dr.

PARK OPPORTUNITIES:

Small picnic shelter, open space/natural areas, trails, trail head, benches, and individual picnic tables.

TRANSITION

ZONE CHARACTERISTICS:

6.2 –acres 1100 ft long by 200 ft wide, open land with slopes between 1.5% and 2%. Located between the Knoll/South Slope and Low Meadow, adjacent to the Christopher Circle neighborhood and Roy Johnson STEM Academy.

PARK OPPORTUNITIES:

Small picnic shelter, open space/natural areas, trails, individual picnic tables.

SOUTH SLOPE

ZONE CHARACTERISTICS:

16 -acres of open rolling terrain, sloping from the Knoll to Oak Grove-Shelby Rd. at 1.0%.

PARK OPPORTUNITIES:

Open space/natural areas, practice field, trails, benches, and parking.

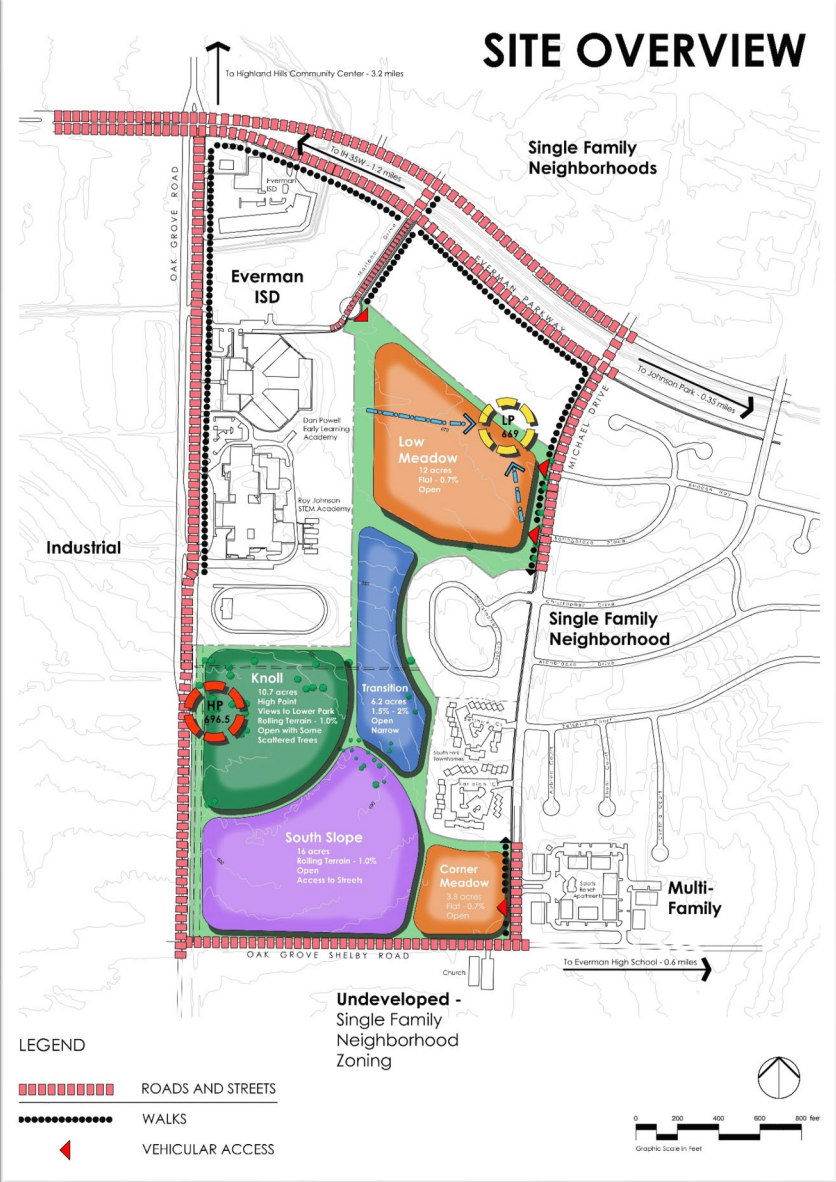
LOW MEADOW

ZONE CHARACTERISTICS:

12 -acres with large oak trees along sidewalk/street of Michael Dr. Includes the low point of the property, positioned approximately 27 ft. lower than the high point. Relatively flat (less than 1%) with 2 drainage swales. Good access to Michael Dr. and the Hamlet neighborhood.

PARK OPPORTUNITIES:

Large picnic shelter, playground, open space/natural areas, trails, trail head, benches, individual picnic tables, parking, and public art.

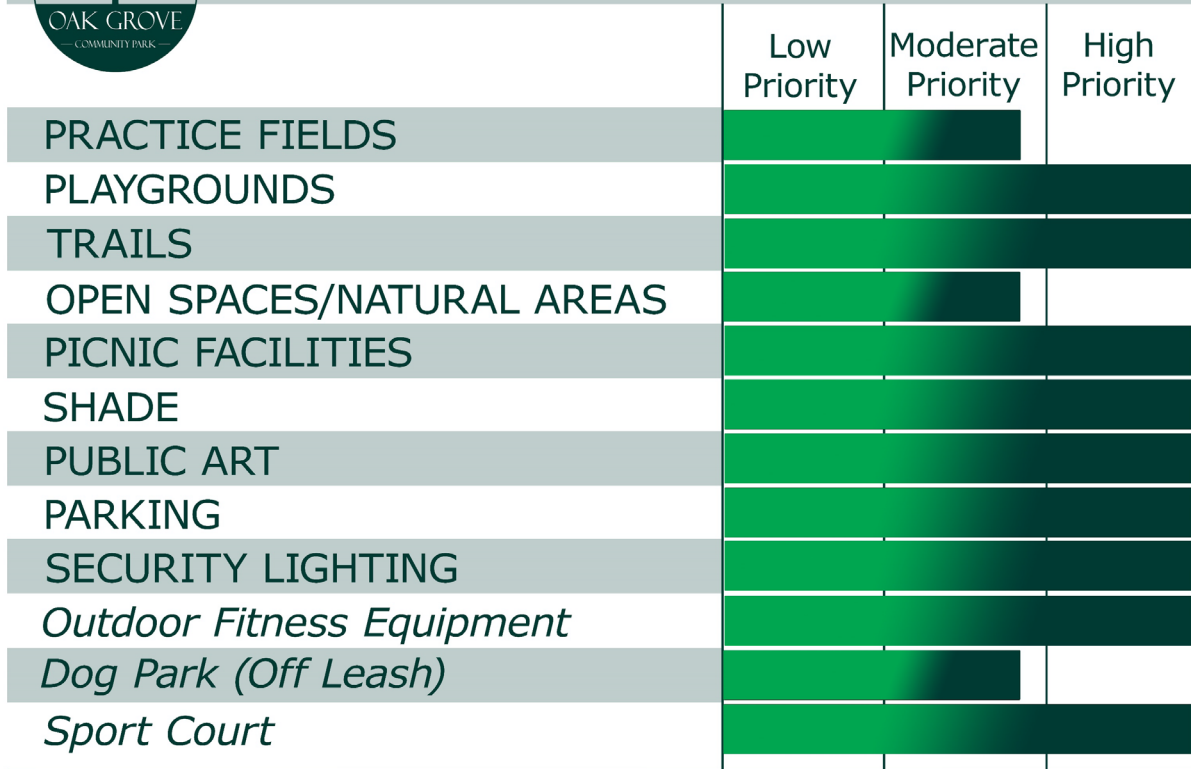




PARK PRIORITIZATION



PARK PRIORITIES



The graph represents the park priorities defined by community member attendee input provided during Public Meeting 1.





CONCLUSION

NEXT STEPS

To be a part of the initial design concepts for Oak Grove Community Park, please complete the PUBLIC SURVEY regarding park priorities. To complete the online survey please use

<https://us.openforms.com/Form/c6cdd018-6358-49b7-acf4-da30eca5163b>

If you are unable to complete the survey online, please contact Danielle O'Flinn for print or additional options.

PUBLIC MEETING 2 – O'Flinn Design Group will present design concepts for Oak Grove Community Park, created from the public priorities defined in this meeting and subsequent survey. Continued public participation in the park planning process will remain an essential guide through the second public meeting. Feedback on design concepts allows the public to communicate their collective park priorities and helps the O'Flinn Design Group refine the Oak Grove Community Park Master Plan in congruence with the community vision.

The date for Public Meeting 2 will be announced at least 30 days advance. Please look for updates on the "Community Resources" provided below.

COMMUNITY RESOURCES

FOR UPDATES AND PUBLIC MEETINGS/EVENT DATES

The Fort Worth Park & Recreation park webpage for Oak Grove Community Park

<https://www.fortworthtexas.gov/departments/parks/parks-and-trails/oak-grove-community-park>

The Fort Worth City Calendar

<https://www.fortworthtexas.gov/departments/parks/events/meetings-and-projects/oak-grove-community-park-public-meeting>

FOR MORE INFORMATION ABOUT FORT WORTH PUBLIC ART PROJECT

Arts Fort Worth

<https://fwpublicart.org> or email talkto@artsfortworth.org

We hope to maintain an open channel of communication with the community regarding Oak Grove Community Park. Please feel free to reach out to one of the following contacts to provide feedback, ask questions, or discuss ideas about the future park.

Patrick Vicknair at Patrick.Vicknair@fortworthtexas.gov

Larry O'Flinn at larry@oflinndesigngroup.com

Danielle O'Flinn at danielle@oflinndesigngroup.com





CREDITS

WORKS CITED

Department of Park & Recreation. 2023. *2023 Park Inventory*. https://www.fortworthtexas.gov/files/assets/public/v/1/parks-and-recreation/documents/park-inventory/2023-park-inventory_1.pdf

Fort Worth Parks & Community Services. January 27, 2015. *Park, Recreation and Open Space Master Plan*. The City of Fort Worth. <https://www.fortworthtexas.gov/files/assets/public/v/1/parks-and-recreation/documents/2015-park-recreation-open-space-master-plan.pdf>

Park & Recreation Department. August 2020. *City of Fort Worth Park, Recreation and Open Space Master Plan 2020 Update*. The City of Fort Worth. <https://www.fortworthtexas.gov/files/assets/public/v/1/parks-and-recreation/documents/2020-parks-open-spaces-master-plan.pdf>.

The City of Fort Worth. May 7, 2022. "Fort Worth Proposition B: Park and Recreation Improvements," in *City of Fort Worth 2022 Bond Program: Summary of Proposed Projects*. 16-29.

Susan Allen Kline and the Fort Worth Parks and Community Services Department. 2010. *Fort Worth Parks*. Chicago: Arcadia Publishing.

Susan Allen Kline. March 19, 2018. "The Extraordinary Legacy of Hare & Hare in Fort Worth" feature for *The Cultural Landscape Foundation*. <https://www.tclf.org/extraordinary-legacy-hare-hare-fort-worth>

IMAGE CREDITS

RENDERINGS & GRAPHICS

Hare & Hare. "Rose Garden in Trinity Park" from the *Fort Worth Municipal Rose Garden Master Plan*. 1926. Image courtesy of the Fort Worth Botanic Gardens Library.

Oak Grove Community Park "Regional Context Map"
Created by Larry O'Flinn, ODG

Oak Grove Community Park "Site Overview"
Created by Larry O'Flinn, ODG

Oak Grove Community Park Logo
Created by Danielle O'Flinn, ODG

PHOTOGRAPHS

All photographs featured in the presentation were photographed by and provided courtesy of Larry O'Flinn and O'Flinn Design Group.

PRESENTATION DESIGN

Danielle O'Flinn, ODG



