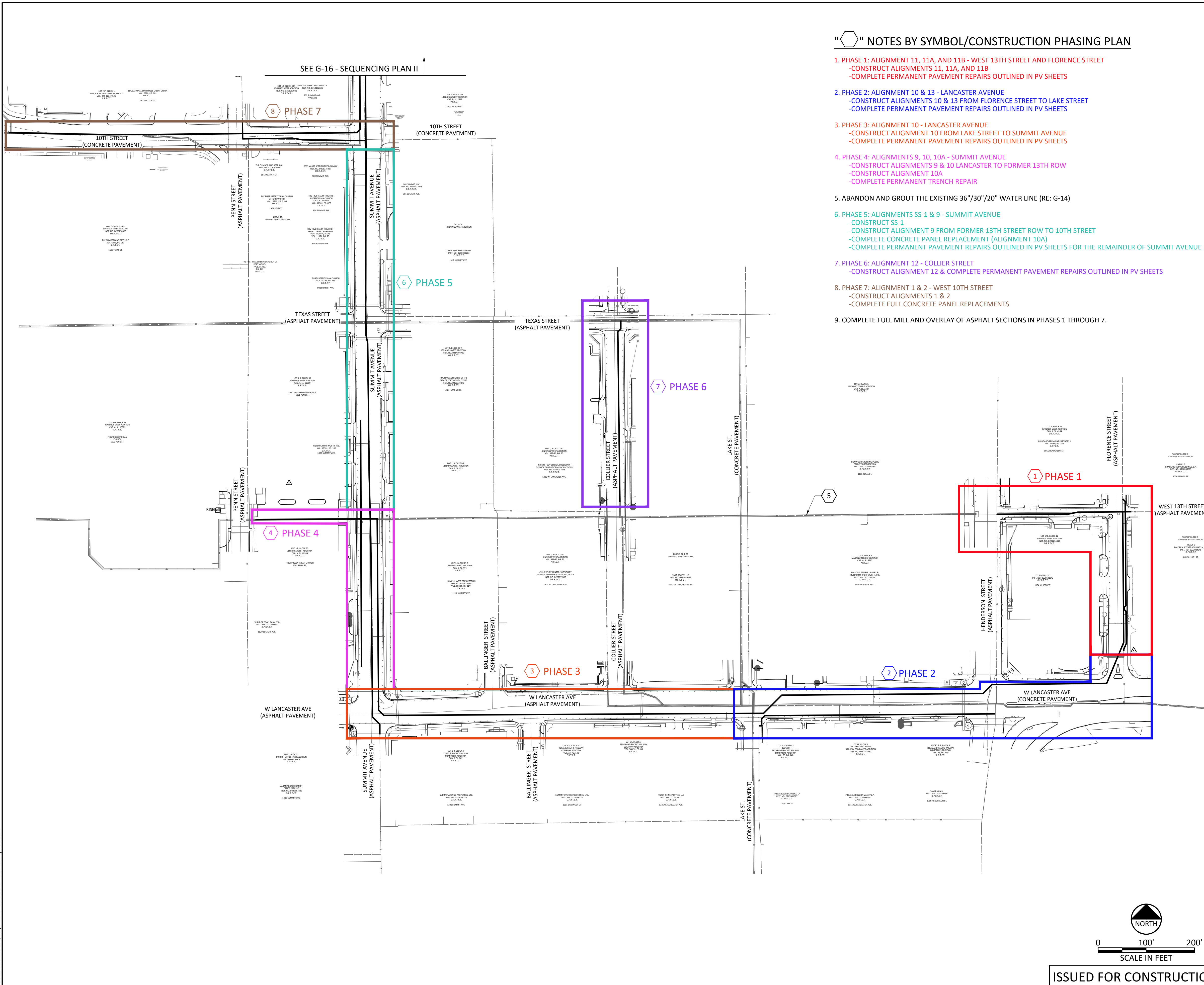


ACAD Ref: 24-2s (LMS Tech) FTW18195  
 Filename: N:\WTU\Drawings\PART 2 ALIGNMENTS\CV-ALL-PL-OVAL04.dwg  
 Last saved: 12/17/2024 4:33 PM Saved By: 90356



"6" NOTES BY SYMBOL/CONSTRUCTION PHASING PLAN

- PHASE 1: ALIGNMENT 11, 11A, AND 11B - WEST 13TH STREET AND FLORENCE STREET  
 -CONSTRUCT ALIGNMENTS 11, 11A, AND 11B  
 -COMPLETE PERMANENT PAVEMENT REPAIRS OUTLINED IN PV SHEETS
- PHASE 2: ALIGNMENT 10 & 13 - LANCASTER AVENUE  
 -CONSTRUCT ALIGNMENTS 10 & 13 FROM FLORENCE STREET TO LAKE STREET  
 -COMPLETE PERMANENT PAVEMENT REPAIRS OUTLINED IN PV SHEETS
- PHASE 3: ALIGNMENT 10 - LANCASTER AVENUE  
 -CONSTRUCT ALIGNMENT 10 FROM LAKE STREET TO SUMMIT AVENUE  
 -COMPLETE PERMANENT PAVEMENT REPAIRS OUTLINED IN PV SHEETS
- PHASE 4: ALIGNMENTS 9, 10, 10A - SUMMIT AVENUE  
 -CONSTRUCT ALIGNMENTS 9 & 10 LANCASTER TO FORMER 13TH ROW  
 -CONSTRUCT ALIGNMENT 10A  
 -COMPLETE PERMANENT TRENCH REPAIR
- ABANDON AND GROUT THE EXISTING 36"/30"/20" WATER LINE (RE: G-14)
- PHASE 5: ALIGNMENTS SS-1 & 9 - SUMMIT AVENUE  
 -CONSTRUCT SS-1  
 -CONSTRUCT ALIGNMENT 9 FROM FORMER 13TH STREET ROW TO 10TH STREET  
 -COMPLETE CONCRETE PANEL REPLACEMENT (ALIGNMENT 10A)  
 -COMPLETE PERMANENT PAVEMENT REPAIRS OUTLINED IN PV SHEETS FOR THE REMAINDER OF SUMMIT AVENUE
- PHASE 6: ALIGNMENT 12 - COLLIER STREET  
 -CONSTRUCT ALIGNMENT 12 & COMPLETE PERMANENT PAVEMENT REPAIRS OUTLINED IN PV SHEETS
- PHASE 7: ALIGNMENT 1 & 2 - WEST 10TH STREET  
 -CONSTRUCT ALIGNMENTS 1 & 2  
 -COMPLETE FULL CONCRETE PANEL REPLACEMENTS
- COMPLETE FULL MILL AND OVERLAY OF ASPHALT SECTIONS IN PHASES 1 THROUGH 7.

REVISIONS		
NO.	DESCRIPTION	DATE
1	ISSUED FOR CONSTRUCTION	12/10/2024
2		
3		

- CONSTRUCTION NOTES
- NOTES:
- THE CONTRACTOR IS REQUIRED TO INSTALL TEMPORARY TEST PLUGS AS NECESSARY FOR HYDROSTATIC TESTING. ALL REQUIRED PLUGS ARE CONSIDERED SUBSIDIARY TO THE PRICE BID.
  - THE MAXIMUM OPEN TRENCH LENGTH IS 150 FEET. ALL OPEN PITS MUST BE PROTECTED ON ALL SIDES WITH CONCRETE BARRIERS OR BACKFILLED EACH NIGHT FOR PUBLIC SAFETY.
  - THE 42-INCH TRANSMISSION MAIN MAY NOT BE TAKEN OUT OF SERVICE BETWEEN JULY 1ST AND SEPTEMBER 15TH.
  - ALL WATER MAIN SHUTDOWNS MUST BE COORDINATED WITH MATTHEW DAVIS (817) 944-8277 A MINIMUM OF 48 HOURS IN ADVANCE.
  - THE CONTRACTOR WILL BE REQUIRED TO FULLY DEMOBILIZE AND COMPLETE FULL WATER LINE TESTING AND PERMANENT PAVEMENT SECTIONS PRIOR TO THE 2026 WORLD CUP. REMOBILIZATION CAN OCCUR AFTER THE WORLD CUP IN ACCORDANCE WITH THE REMOBILIZATION BID ITEM.

THE SEAL THAT ORIGINALLY APPEARED ON THIS DOCUMENT WAS AUTHORIZED BY AMANDA N. JOHNSON P.E. TEXAS NO. 431706 ON 09/12/2024. ALTERATION OF A SEALED DOCUMENT WITHOUT PROPER NOTIFICATION OF THE RESPONSIBLE ENGINEER IS AN OFFENSE UNDER THE TEXAS ENGINEERING PRACTICE ACT.

Freese and Nichols, Inc.  
 Texas Registered Engineering Firm F-2144

801 Cherry Street, Suite 2800  
 Fort Worth, Texas 76102  
 Phone - (817) 735-7300  
 Web - www.freese.com

HORIZONTAL & VERTICAL CONTROL

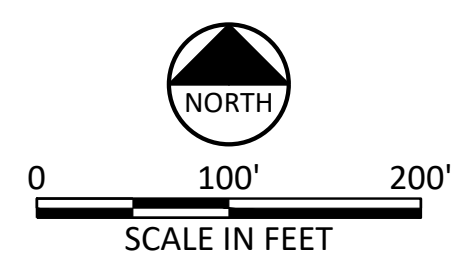
CITY PROJECT #105064  
 WATER PROJECT #  
 WATER MAP #  
 MAPSCO #76C, 76D, 62Z

CITY OF FORT WORTH, TEXAS  
 WATER DEPARTMENT

DOWNTOWN CAST IRON REPLACEMENTS

GENERAL SEQUENCING PLAN I			
DESIGNED: CAY	FULL SIZE SCALE: AS NOTED	DATE: AUGUST 2024	SHEET G-15
DRAWN: AL			

ISSUED FOR CONSTRUCTION



X-28340

DOWNTOWN CAST IRON REPLACEMENTS