

Trinity River Waterwheels Initiative

October 24, 2023

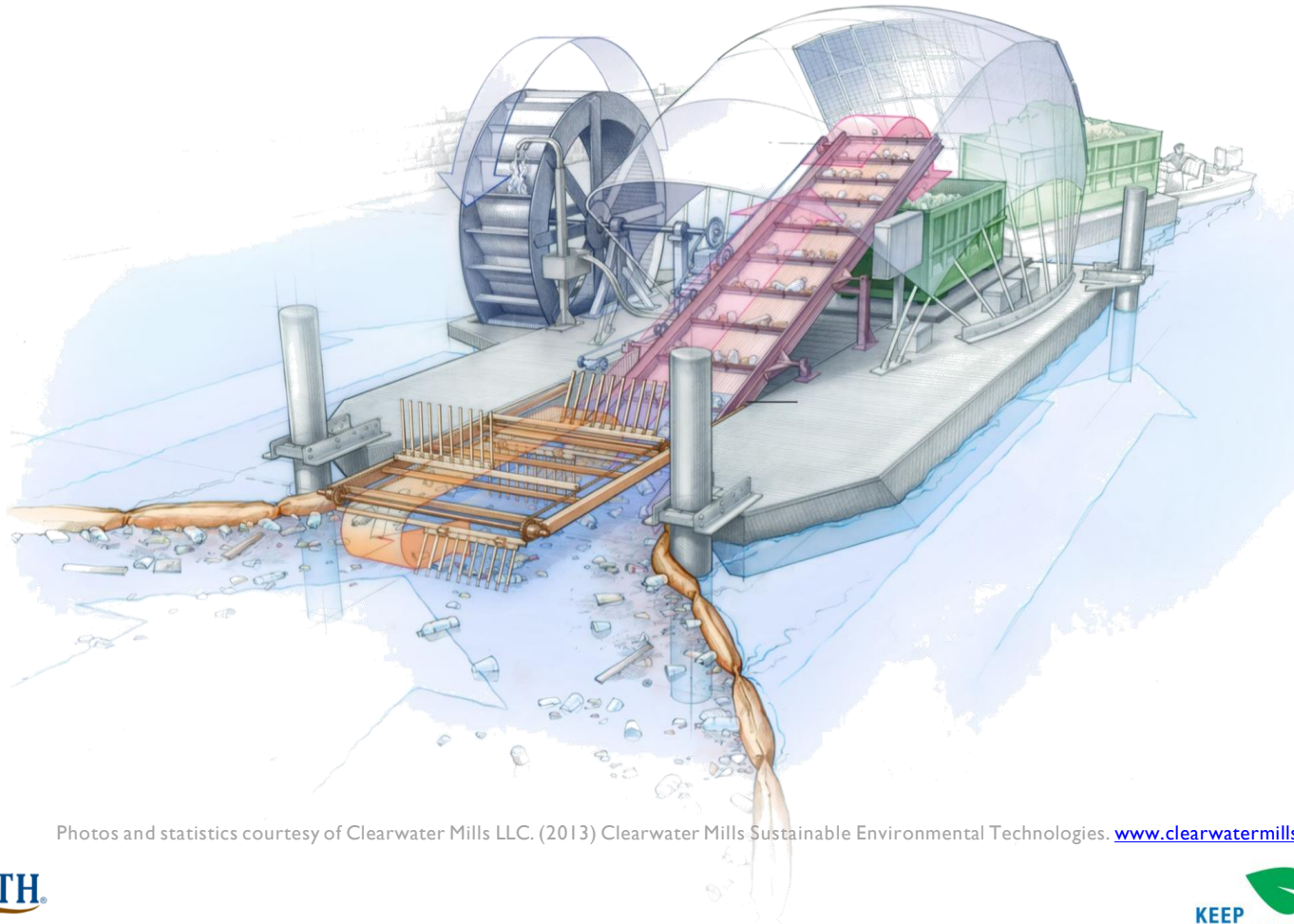


CO - SPONSORS



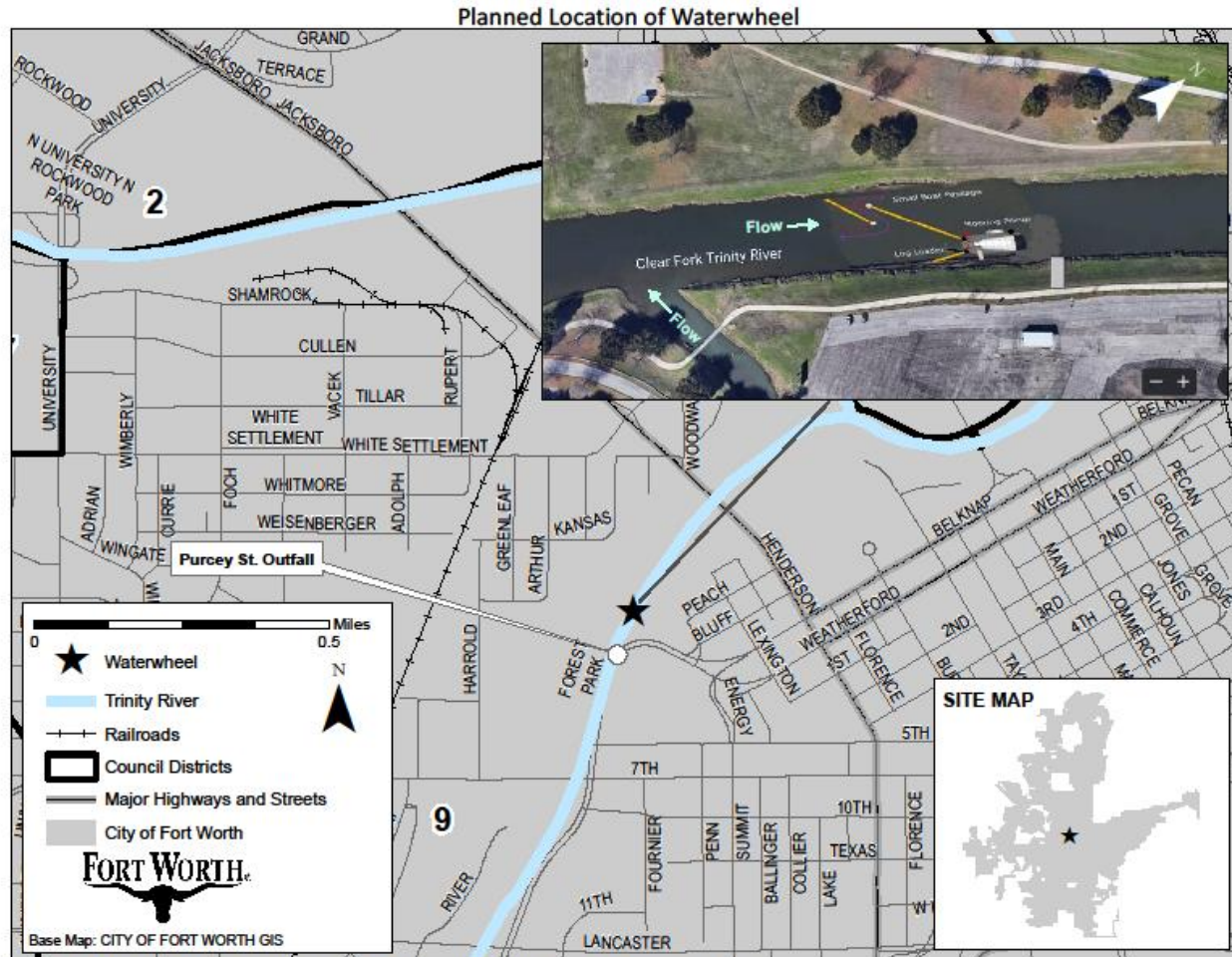
What is a Waterwheel?

A waterwheel is a pollution-control, wheel-based machine that is placed in flowing waterways to collect and remove floatable pollution.



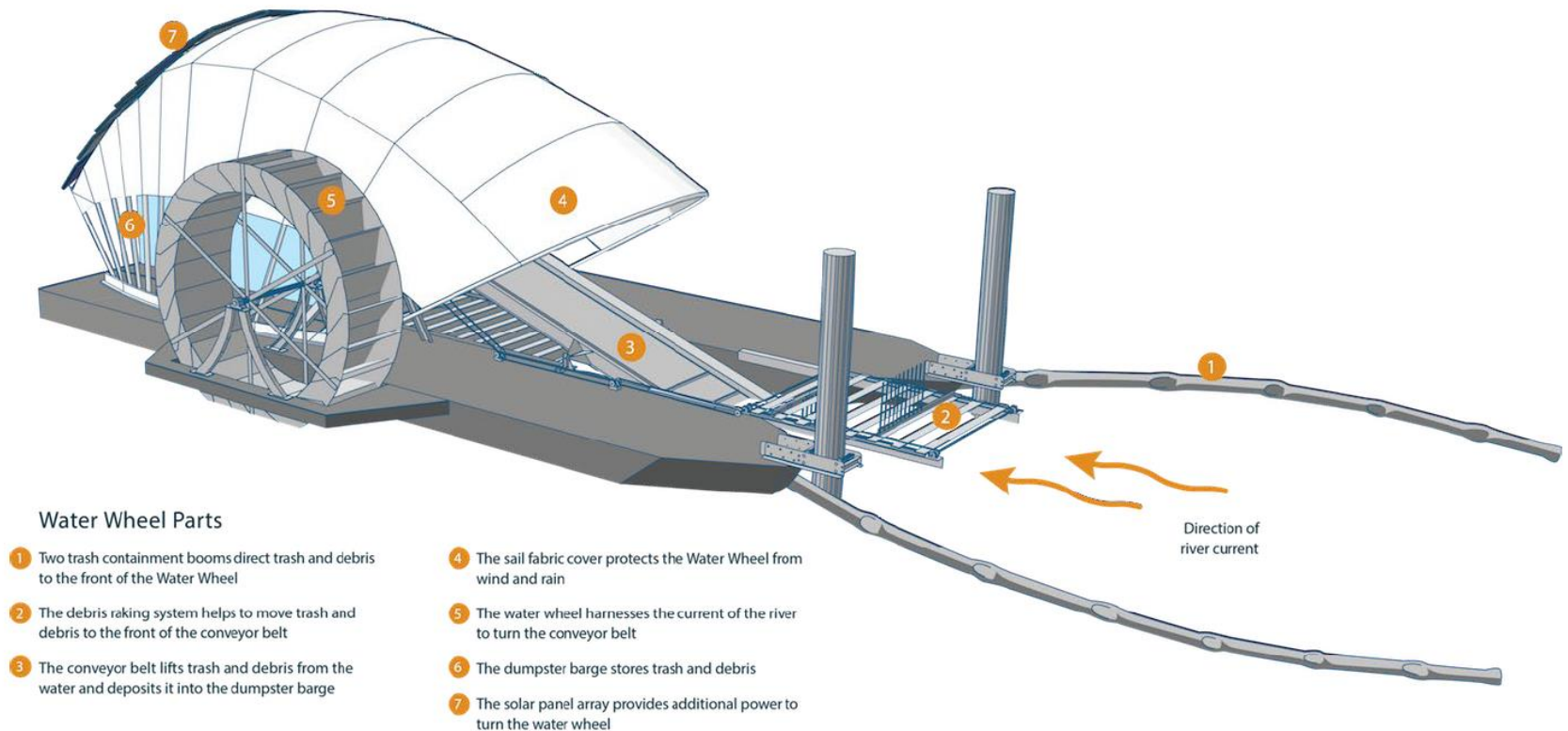
Photos and statistics courtesy of Clearwater Mills LLC. (2013) Clearwater Mills Sustainable Environmental Technologies. www.clearwatermills.com

Planned Location of the Waterwheel



Primary Components

Figure 1 illustrates the primary components.



All of the equipment and covering structure of the Waterwheel is mounted on and supported by a sectional steel barge floating platform with the exception of the dumpster which is on a separate barge for transport to a shore-side transfer facility.



*Data taken from Basis of Design, Technical Specifications, Operations, Service Manual, Design Calculations and Construction Drawings from Fort Worth Trinity River Waterwheel Powered Trash Interceptor document



Waterwheel in Panama – Juan Diaz River



Mr. Trash Wheel – Baltimore, Maryland

