



Tarrant County

Blue Ribbon

**Action Committee on Child
Care**

Where did the Blue Ribbon Action Committee come from??

March
2020



COVID-19 Pandemic shuts down North Texas.
Community leaders convene on rapid-response efforts & identify child care as an essential service to maintain.

February
2021



Historic levels of federal COVID Relief Funding are dispersed to states and localities via the American Rescue Plan Act.

August
2021



Child care identified by elected officials as a priority area.
Significant public investments for child care across City of Fort Worth, City of Arlington & Tarrant County.

January
2022



Blue Ribbon Action Committee on Child Care formed by elected officials to guide new public investments & shepherd community-wide vision & progress for child care.



*Alfreda Norman**
Retired, former Federal Reserve Bank of Dallas



*Rose Bradshaw**
North Texas Community Foundation



Jay Chapa
Jay Chapa Strategic Solutions



Pete Geren
Sid Richardson Foundation



Jessica Gomez
The Momentous Institute



Brooke Goggans
Mosaic Strategy Partners



Ebony Jones
Girls, Inc.



Elva LeBlanc
Tarrant County College



Courtney Lewis
Bancorp South



Katy Magruder
PNC Bank



Jerletha McDonald
Arlington DFW Child Care



Carolyn Mentasana
Arlington Tomorrow Foundation



Drexel Owusu
(former) Dallas Foundation



Jeremy Smith
Rainwater Foundation



Terese Stevenson
Rees-Jones Foundation



Winjie Tang Miao
Texas Health Resources



Blue Ribbon Action Committee on Child Care

Call to Action

*To dramatically improve outcomes for young children 0-5, working parents and child care educators by identifying **bold, innovative, cross-sector solutions that improve access to and quality of child care at scale in Tarrant County.***

North Star Priorities

The Blue Ribbon Action Committee is charged with envisioning and connecting bold ideas to action in support the following North Star Priorities:

Places and Spaces

Expanding and improving quality early education infrastructure and classrooms.

Early Educator Workforce

Advancing approaches that design and sustainably rebuild a strong pipeline for a corps of quality early educators.

Sustainable Cost Model

Advancing cost modeling and layered funding to cover the true costs of quality child care (towards building a comprehensive 0-5 system)

Mixed Delivery 0-5 System

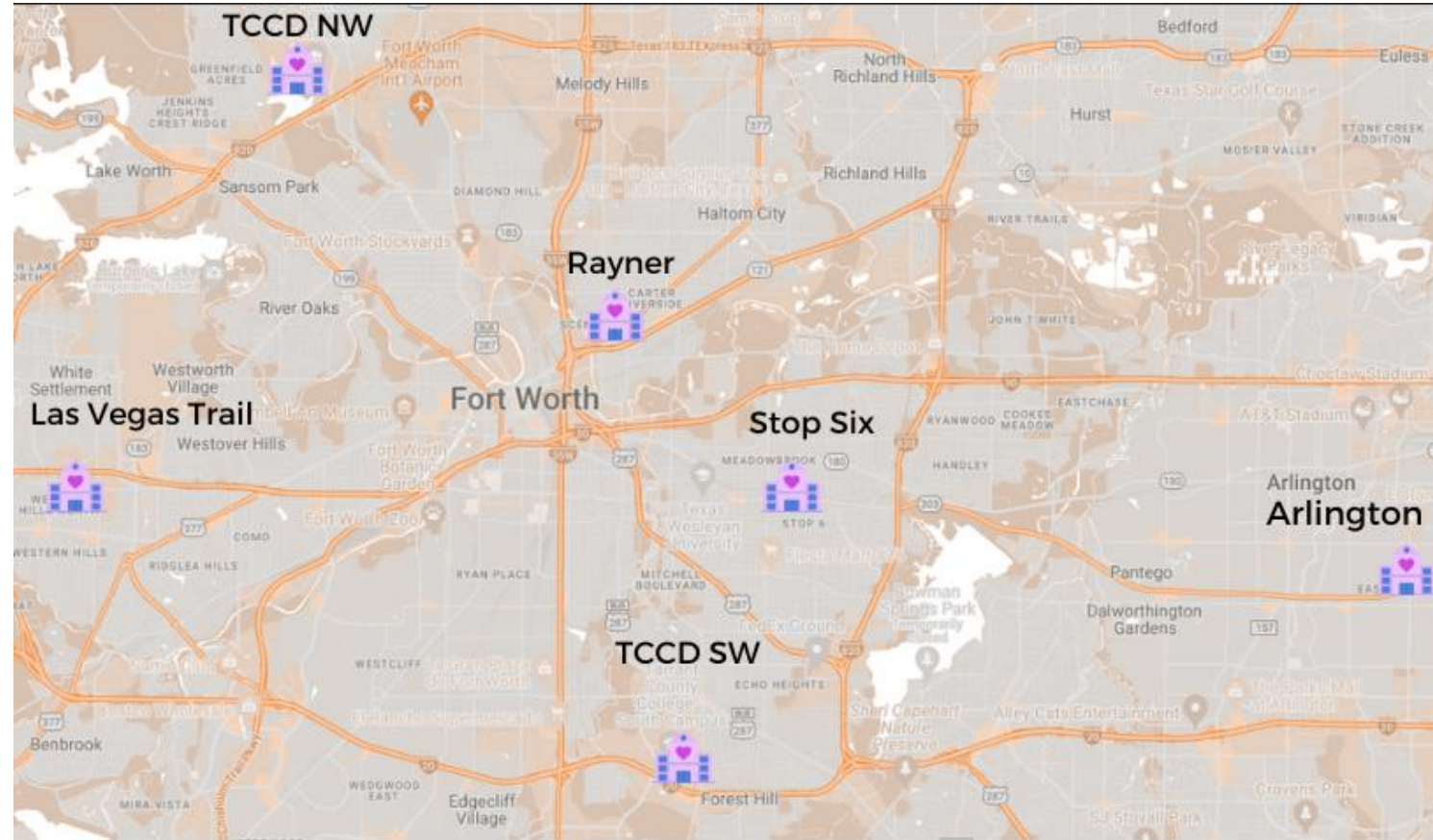
Advancing approaches that invest in our community-based child care and ensure pre-kindergarten can be delivered in community-based early learning centers in addition to elementary schools

Outcome #1: PLACES & SPACES - Expanded high-quality seats for infants & toddlers in high-need areas through 6 public-private partnerships.

6 Early Childhood Facilities

50 new classrooms
Total estimated licensed
capacity of 928

- *Serving estimated 5,540 young children over 20 yrs.*
- *Drawing down well over \$120M federal resources into the community (over 10+ yrs.)*

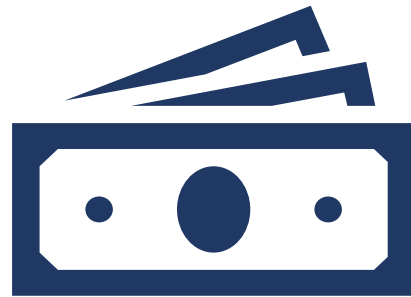


Outcome #2: SUSTAINABLE COST MODEL - Modeling innovative approach to financing child care via the Prime Early Learning Pilot

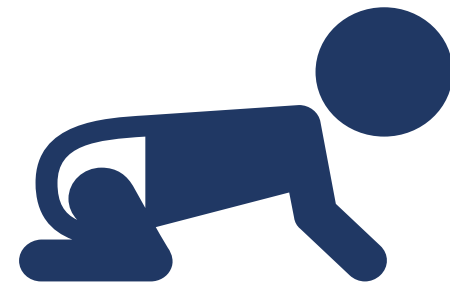
The Prime Early Learning Pilot provides foundational grant funding to a cohort of 19 TRS-4 star programs operating in high-need areas across Fort Worth & Tarrant County.



+



+



Fixed Cost Offset

Offsets building & utility costs

Compensation Offset

Increases teacher pay to a min. \$18/hour

Funded Priorities Offset

Infants & toddlers
Children w/special needs
Children of child care educators

Outcome #2: SUSTAINABLE COST MODEL - Modeling innovative approach to financing child care via the Prime Early Learning Pilot

Pilot Partners: Research & Thought Partners



Outcome #3: EARLY EDUCATOR WORKFORCE - Quantify & project the workforce needs via an authoritative North Texas workforce study

Research Partner



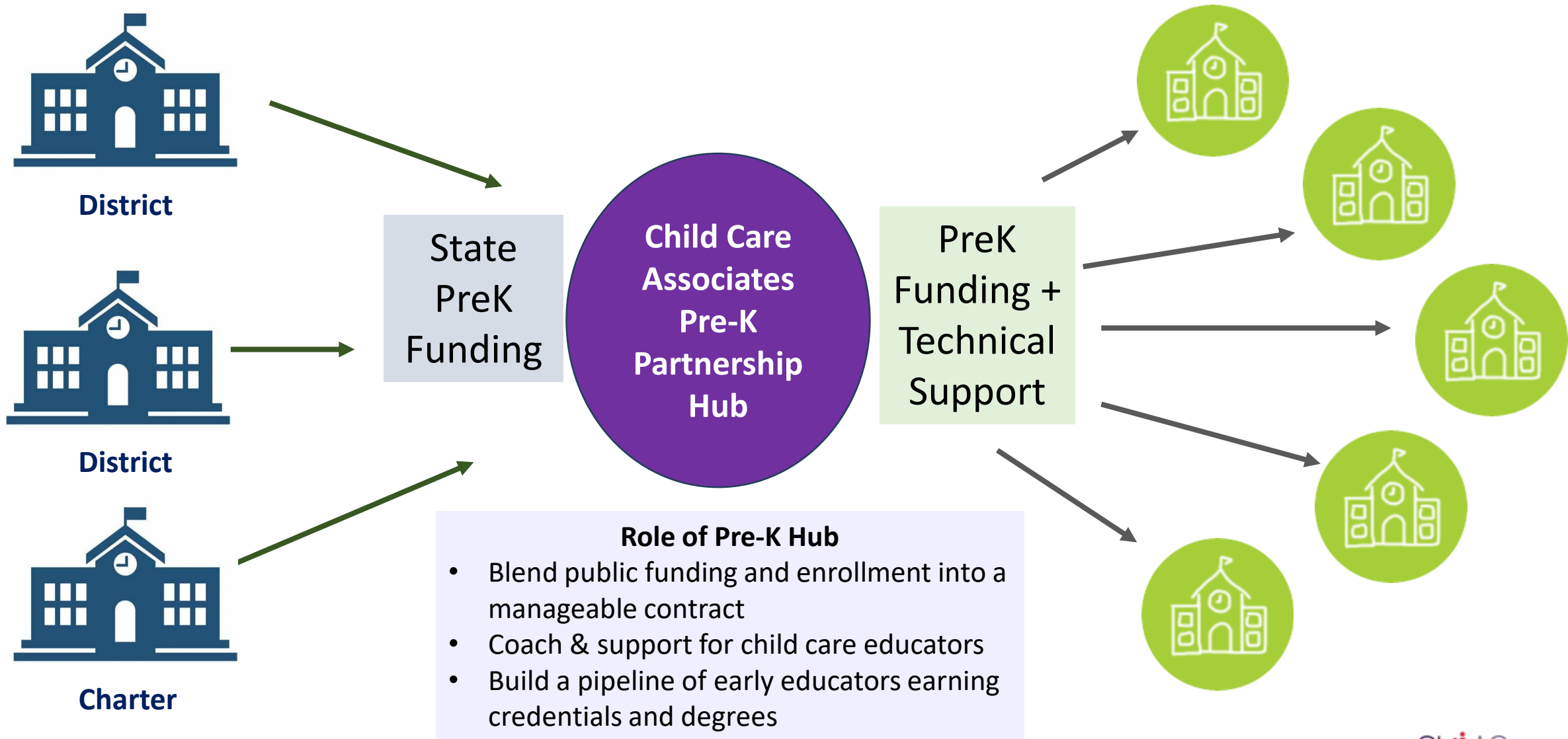
Philanthropic Partners



North Texas Early Educator Workforce Study:

1. Quantify the existing early educator workforce in North Texas
2. Quantify today's regional need for early educators
3. Develop 5- and 10-year projected workforce needs for early educators
4. Develop regional recommendations to inform near-term regional strategies

Outcome #4: MIXED DELIVERY PRE-K: Improving access to public pre-k for working families who need full-day child care.





PILLAR VISIONING

momentum
moving Texas forward
in early learning

WHAT ELEMENTS OF THIS VISION FEEL MOST URGENT?

ACCESS

BY 2030, ALL TEXAS FAMILIES WILL HAVE ACCESS TO AND KNOWLEDGE OF A VARIETY OF AFFORDABLE AND HIGH-QUALITY EARLY LEARNING OPTIONS IN THEIR COMMUNITY THAT MEET THEIR DISTINCT NEEDS...

BY END OF 2025 LEG SESSION, LEG & GOV- w/ STATE AGENCIES- CREATE A UNIFIED EARLY ED GOVERNANCE SYSTEM

- ELIMINATES BUREAUCRACY, COST DUPLICATION
- SINGLE INTAKE SYSTEM
- ALIGN PROGRAM ELIGIBILITY FOR PROGRAM SERVICES RELATED TO EC.

BY 2030, TX WILL HAVE THE GOVT STRUCTURES & SUPPORT SYSTEMS WHERE ALL STAFF IN EC SYSTEMS EXPERIENCE HIGH QUALITY WORKING CONDITIONS, ARE PAID A LIVING WAGE & HAVE ACCESS TO ONGOING COACHING & SUPPORT ACROSS A VARIETY OF RECOGNIZED CAREER PATHWAYS.

QUALITY

ALL E.C. PROFESSIONALS & LEADERS HAVE ACCESS & SUPPORTS TO TAKE ADVANTAGE OF EVIDENCE-BASED & DEVELOPMENTALLY APPROPRIATE PD & TRAINING BY 2030

BY 2030, TEXAS WILL HAVE A SYSTEM IN PLACE SO ALL ENVIRONMENTS WILL SHARE A COMMON, EVIDENCE-BASED, DEVELOPMENTALLY APPROPRIATE UNDERSTANDING & PRACTICE OF HIGH-QUALITY EARLY LEARNING & CARE

BY 2030, MIXED DELIVERY PROVIDERS WILL RECOGNIZE AS STAKEHOLDERS & PROVIDE THEM WITH EVIDENCE-BASED RESOURCES THAT SUPPORT WHOLE CHILD DEVELOPMENT

BY 2030, ALL PROVIDERS IN THE MIXED-DELIVERY ECOSYSTEM WILL OFFER PROGRAMMING THAT IS:

- CHILD-CENTERED
- PLAY BASED/EXPERIENTIAL
- INCLUSIVE
- CULTURALLY-RESPONSIVE
- EVIDENCE-BASED

WORKFORCE

IN 2030, TEXAS WILL BE DESIGNED & GOVERNED BY THEIR EC PROFESSIONS THAT LEAD TO CREDENTIALS WHICH LEVERAGE PRIOR LEARNING & EXPERIENCE & ARE RECOGNIZED ACROSS PROGRAM SETTINGS

IN 2030, TEXAS WILL HAVE A RECOGNIZED & WELL-FUNDED & WIDELY PUBLISHED PAY SCALE & BENEFITS RELATED TO EXC- PROVIDED (NOT THE CHILD) WITH DEFINED TIERS BASED ON CREDENTIALS & INDUSTRY EXP.

BY 2030, TEXAS WILL VALUE, RECOGNIZE & UNDERSTAND THE CRITICAL ROLE OF EDUCATORS WHO PROVIDE LEARNING FOR 0-5 BY FULLY FUNDING, INCREASE COMMUNITY BUY-IN (SUCH AS THROUGH A MARKETING CAMPAIGN) & EFFECTIVELY DEVELOPING OUR EDUCATORS.

ENABLING CONDITIONS

BY 2030, THERE IS A UNIFIED STATE VISION FOR MIXED DELIVERY EC THAT IS BOTH INFORMED BY & ITERATIVELY GUIDES AN INTEGRATED ROBUST DATA SYSTEM TO ENABLE THE RIGHT LEADERS TO BE ACCOUNTABLE, EMPOWERED, & INSPIRED TO ACT ON BEHALF OF SHARED DESIRED OUTCOMES.

BY 2030, OUR EARLY ED SYSTEM IS DESIGNED AROUND THE REALITIES OF TX FAMILIES & COMMUNITY-BASED PROVIDERS WITH MESSAGING THAT BRINGS TO LIFE HOW EARLY ED SUPPORTS FLOURISHING FAMILIES & A THRIVING TX ECONOMY.

FUNDING INPUTS WILL INCENTIVIZE DIFFERENT STREAMS IT FUNDS TRUE COST OF QUALITY SO ALL FAMILIES HAVE ACCESS TO H.Q. PROVIDER OF THEIR CHOICE.

BY 2030, AS A RESULT OF MEMBERS OF THE EC COMMUNITY DEVELOPING TO EACH OTHER, WE HAVE DEVELOPED A COHESIVE & COMPREHENSIVE APPROACH TO SERVING OUR EARLIEST LEARNERS

Child Care Associates | earlymatters | PHILANTHROPY ADVOCATES | Creative Catalyst.com

