



Lake Arlington Force Main - Part 1 and Part 2

City of Fort Worth Water capital improvement project

Construction Open House

Saturday, November 2, 2024 - 2 p.m.

Handley Meadowbrook Community Center, 6201 Beaty Street, 76112

Agenda

- Introductions
- Project Overview
- Project Area
- Frequently Asked Questions
- Timeline



Your project team includes:

Project Manager: April Rose Escamilla, P.E.

- 817-392-8455; April.Escamilla@fortworthtexas.gov

Inspector: Shane Behn

- 682-328-1264; Shane.Behn@FortWorthtexas.gov

Your project team includes:

Contractor: Belt Construction of Texas

- Jason Langford

Engineering Design Consultant: Freese and Nichols

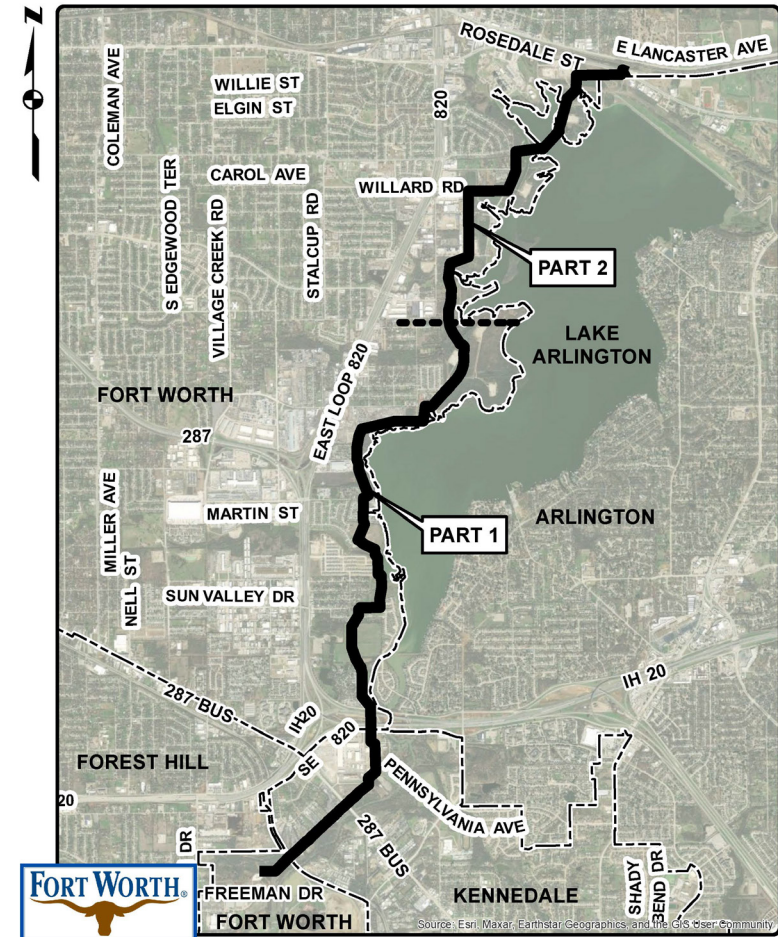
- Amanda Johnson

Project Overview

The Lake Arlington force main is part of a project that will increase the sanitary sewer capacity to handle projected growth. That growth includes the new Tarleton campus as well as the wholesale cities of Burleson and Crowley.

The Lake Arlington force main is 42 inches in diameter. The main will be installed from the lift station – north of Freeman Drive - through Kennedale, cross I-20 and Hwy 287, and continue northeast between Loop 820 and Lake Arlington.

Lake Arlington Force Main



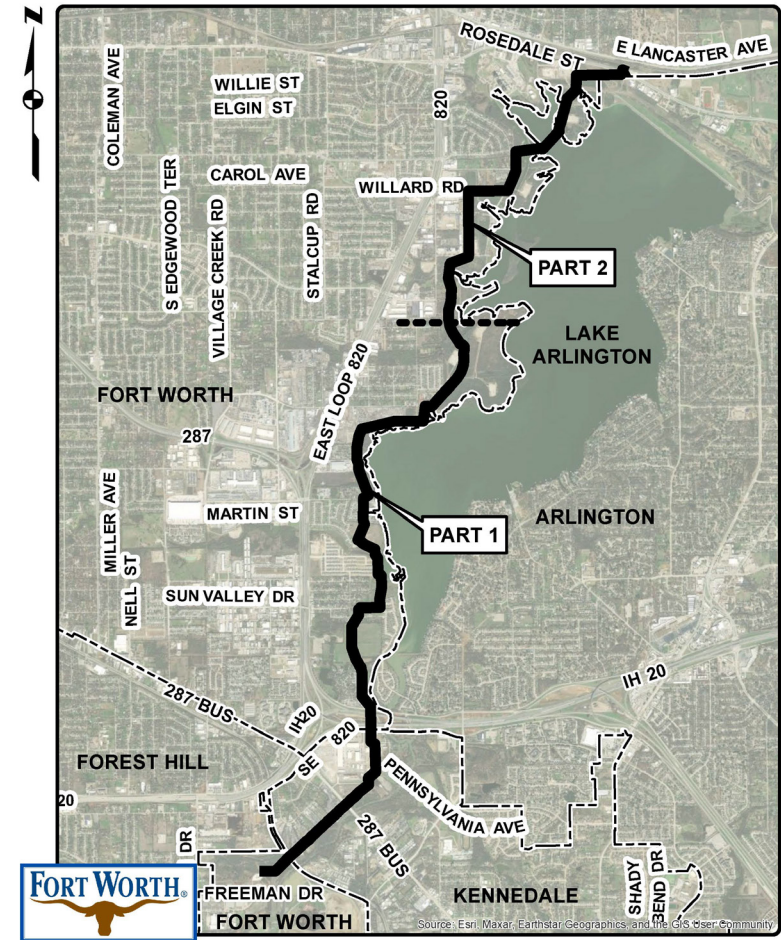
Project Overview

The force main will discharge into the existing Village Creek collection system north of Lake Arlington, just south of Rosedale Street. The total length of the main is 7 miles.

A municipal force main is a pressurized pipeline that carries wastewater from a pump station or lift station (in this project, the Freeman Drive area).

Pumps and compressors in lift stations provide the energy to keep the wastewater under pressure, and moving to its destination.

Lake Arlington Force Main

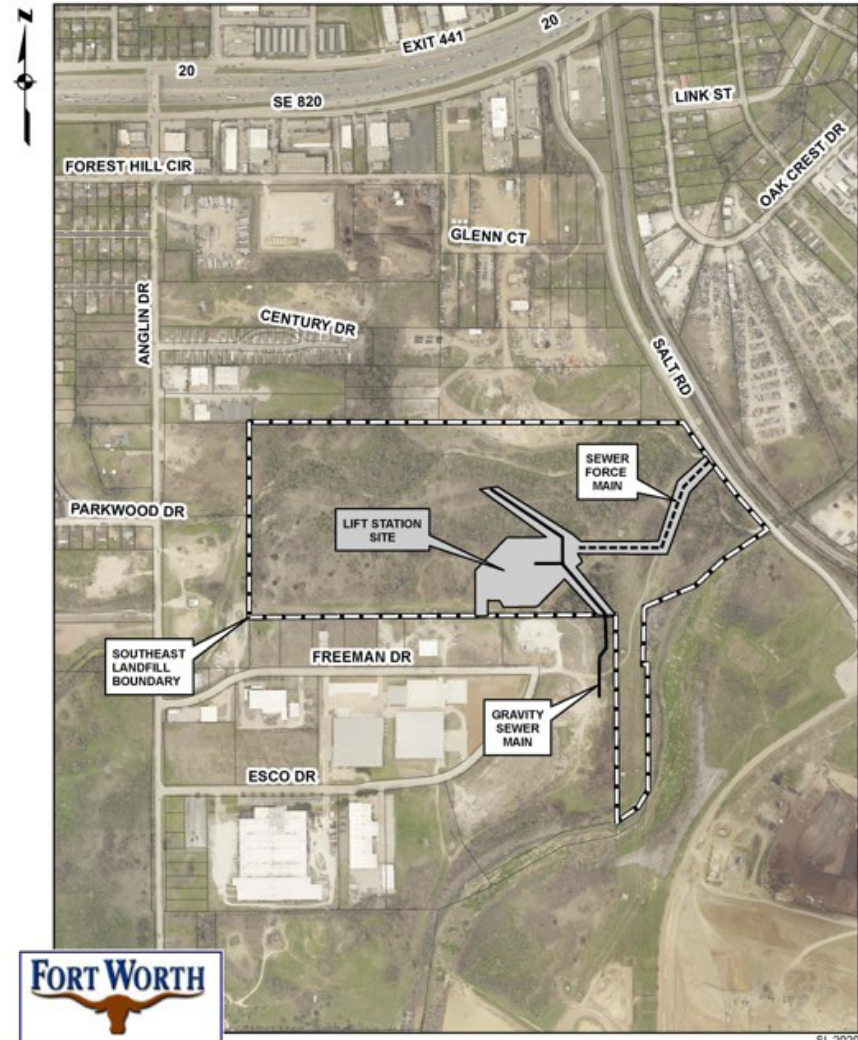


Project Overview

This Fort Worth Water capital improvement project is divided into three parts – Lake Arlington Force Main Part 1, Lake Arlington Force Main Part 2, and the Lake Arlington Lift Station.

The Lake Arlington force main is part of a project that will increase the sanitary sewer capacity to handle projected growth. That growth includes the new Tarleton campus as well as the wholesale cities of Burleson and Crowley.

The lift station construction (pictured, south end of the project near Freeman Drive) is complete.



Project Overview

Part 1 of the force main starts at the lift station and ends east of the Cravens Road and Berry Street intersection (pictured). This segment is approximately 4.76 miles in length.

Part 2 of the force main picks up at the Cravens Road and Berry Street intersection and extends to just south of Rosedale Street. This segment is approximately 2.21 miles in length.

Part 3 is the lift station. It was constructed just north of Freeman Drive, south of Interstate 20 and east of Anglin Drive.



Why are you doing this project?

In 2018, the City of Fort Worth Water utility hired an engineering firm to design the Lake Arlington Lift Station and the Lake Arlington Force Main.

The goal was to design a 1,000 linear foot aerial crossing of the force main across Lake Arlington at eight locations along the force main.

- An additional survey was done along Quail Road
- Lead testing was performed along the lift station access road
- And, erosion improvements were designed on the Village Creek tributary near Salt Road.

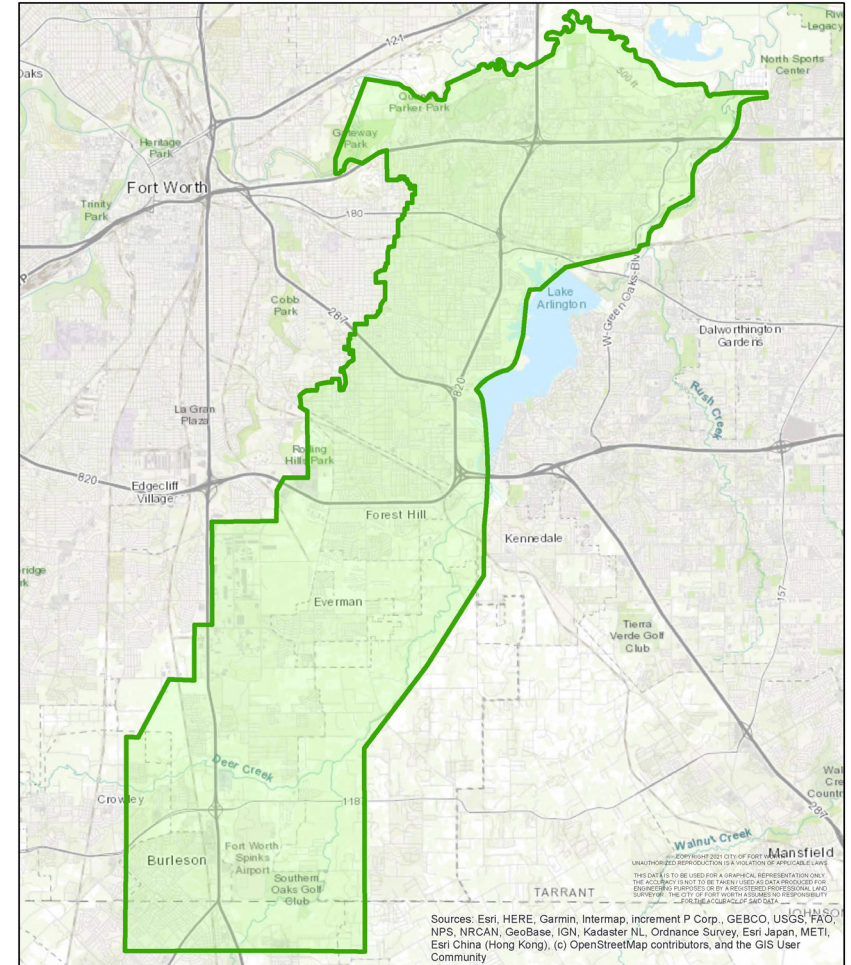


Why are you doing this project?

At that time the existing wastewater collection system serving the Village Creek Wastewater Basin was at capacity and some areas in that area were experiencing wet weather overflows.

Wet weather overflows happen when there are significant rainfall events that overwhelm the stormwater network and spill over into the sewer system.

This impacts properties in the low-lying areas.





Who will be impacted?

Part 1 of this water capital improvement project is in Fort Worth Council District 5, Council District 8 and the city of Kennedale.

Part 2 is in Fort Worth Council District 5.

Construction will impact the Carver Heights East neighborhood association, Handley neighborhood association and, Waterview at Enchanted Bay HOA.

Will there be lane closures during construction?

There may be some lane closures as the contractor works through the project. Please watch for signs.

The hours of construction are 7 a.m. to 6 p.m., Monday-Friday and, if requested by the contractor, 9 a.m. to 4 pm and 5 pm on Saturdays.

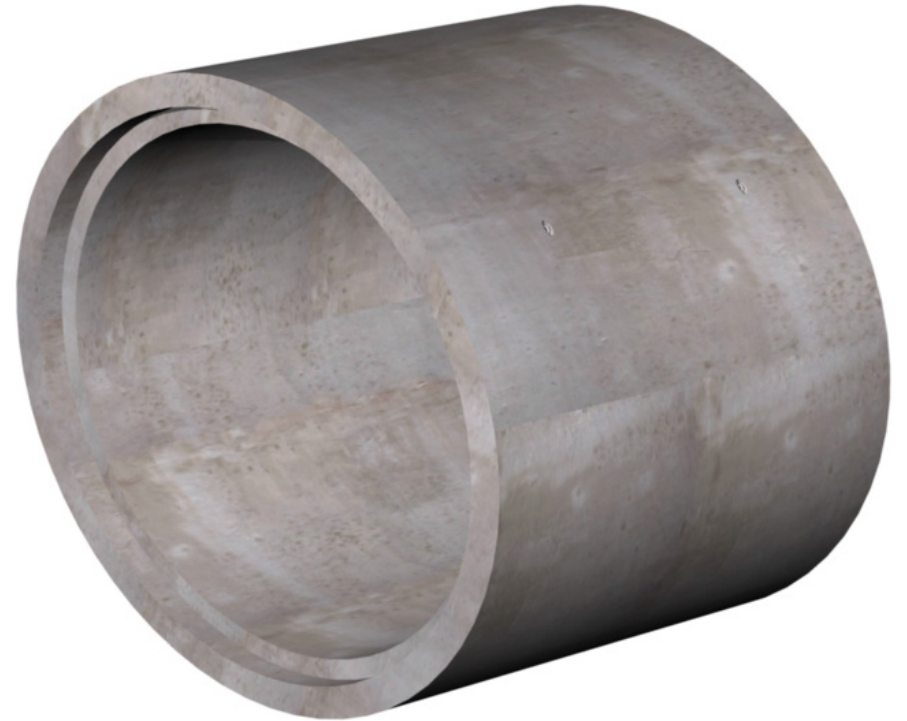
Signs will be posted to alert motorists.



Will our sewer service be interrupted?

No, sanitary sewer service will not be interrupted.

This 42-inch in diameter force main does not connect directly to any customer lines.





Does the City need access to our property?

Construction will be in the streets and easements.

What happens if my property is damaged?

The contractor will take pictures and video of the property before breaking ground.

We also encourage property owners to take pictures and video (with a date stamp) of their property prior to construction.

Damage resulting from the contractor's activities during construction is the responsibility of the contractor.

How will we know construction is starting?

If you live in an area impacted by the construction keep an eye on your front door for a door hanger from the City of Fort Worth.

You will receive two door hangers.

The first one says
“Construction Starts in 7 days.”

WATER UTILITY IMPROVEMENTS

Construction Starts in 7 Days

WATER AND/OR WASTEWATER improvements are coming to your neighborhood. Crews are scheduled to begin work within the next SEVEN days, weather permitting.

Residents will have access to homes at all times. Water service will only be interrupted for short periods of time and advance notice will be provided as to when this will occur. There is never an interruption to wastewater service.

Residents are asked to keep all vehicles off both sides of the street during the week from 7 a.m. to 6 p.m. Travel and driveway access will be limited at times during construction.

For questions, please call 817-392-8306.

MEJORAMIENTO EN LA UTILIDAD DE AGUAS

Construcción Comienza en 7 días

Mejoramiento a agua y aguas residuales llegan a su vecindario. Los equipos están programados para comenzar a trabajar dentro de los próximos SIETE días, si el tiempo lo permite.

Los residentes tendrán acceso a sus hogares en todo momento. El servicio de agua sólo será interrumpido por períodos cortos del tiempo y el previo aviso será proporcionado en cuanto a cuando esto ocurra. Nunca hay una interrupción de servicio de alcantarillado y saneamiento.

Se pide a los residentes que retiren todos los vehículos desde a ambos lados de la calle durante la semana de 7 a.m. a 6 p.m. Los viajes y el acceso a la cochera estarán limitados a veces durante la construcción.

Para preguntas, por favor llame al 817-392-8306.

How will we know construction is starting?

The second door hanger says “Construction Starts Tomorrow.”

The inspector will include his/her business card and contact information on the door hanger.

WATER UTILITY IMPROVEMENTS

Construction Starts TOMORROW

WATER AND/OR WASTEWATER improvements are coming to your neighborhood. Crews are scheduled to begin work **TOMORROW**, weather permitting.

Residents will have access to homes. Water service will only be interrupted for short periods of time and advance notice will be provided as to when this will occur.

Residents are asked to keep all vehicles off both sides of the street during the week from 7 a.m. to 6 p.m. Travel and driveway access will be limited at times during construction.

For questions, please call 817-392-8306.

MEJORAMIENTO EN LA UTILIDAD DE AGUAS

La construcción empieza MAÑANA

Mejoramiento a agua y aguas residuales llegan a su vecindario. Los equipos están programados para comenzar a trabajar **MAÑANA**, si el tiempo lo permite.

Los residentes tendrán acceso a sus hogares en todo momento. El servicio de agua sólo será interrumpido por períodos cortos del tiempo y el previo aviso será proporcionado en cuanto a cuando esto ocurra. Nunca hay una interrupción de servicio de alcantarillado y saneamiento.

Se pide a los residentes que retiren todos los vehículos desde a ambos lados de la calle durante la semana de 7 a.m. a 6 p.m. Los viajes y el acceso a la cochera estarán limitados a veces durante la construcción.

Para preguntas, por favor llame al 817-392-8306.

Timeline

Construction is anticipated to start on Thursday, November 7, 2024.

The projected end date is May 2027. This is a 900-day contract.

Pending material lead times, the contractor will start at the north end of the project in the Rosedale Street/East Lancaster Avenue area.



Where can I get more information?

Go to www.FortWorthTexas.gov and type the project number – 100995-1 – in the search bar on the home page. Lake Arlington Force Main Part 1 Improvements will pop up. Type in 100995-2 and Lake Arlington Force Main Part 2 will pop up.

To get project updates, scroll to the bottom of the project page and click on “Subscribe to this Page.”

The project map, and the project summary/frequently asked questions will be linked to this project page.

How do I report an emergency or non-emergency?

Emergencies

Water main breaks, sewer backups - 24 hours a day

817-392-4477, [Select Option 1](#)

Water Call Center (non-emergency)

- 7 am to 7 pm Monday through Friday
- 817-392-4477
- Closed City holidays



Download the MyFW app from the App Store or Google Play. You can report sewer overflows, leaks and water main breaks, missing or broken meter lids, water theft, water violations, no water service, water pressure issues and other sewer concerns.

Your project team includes:

Project Manager: April Rose Escamilla, P.E.

- 817-392-8455; April.Escamilla@fortworthtexas.gov

Inspector: Shane Behn

- 682-328-1264; Shane.Behn@FortWorthTexas.gov

Your project team includes:

Contractor: Belt Construction of Texas

- Jason Langford

Engineering Design Consultant: Freese and Nichols

- Amanda Johnson

Thank you



FORT WORTH[®]

